



**Price**  
**£375,000**

**Freehold**

4x  1x  2x 

**Lincoln Road,  
Maidstone, Kent ME15**

**OVER 60?**

Secure this property  
for up to **59% less!**

*Wards*  
Helping you move forwards





## Main features

- Extended family home
- Located on a pretty tree-lined residential road
- Plenty of potential to create additional living space (subject to planning permission)
- Generous living accommodation
- Great location within a short distance of local amenities

## Accommodation

### GROUND FLOOR

- Porch
- Hallway
- Lounge: 12'11 x 12'0 (3.94m x 3.66m)
- Dining Room: 13'0 x 8'11 (3.97m x 2.72m)
- Kitchen: 21'0 x 9'0 (6.41m x 2.75m)
- Utility Room: 8'11 x 6'0 (2.72m x 1.83m)
- Storage Room

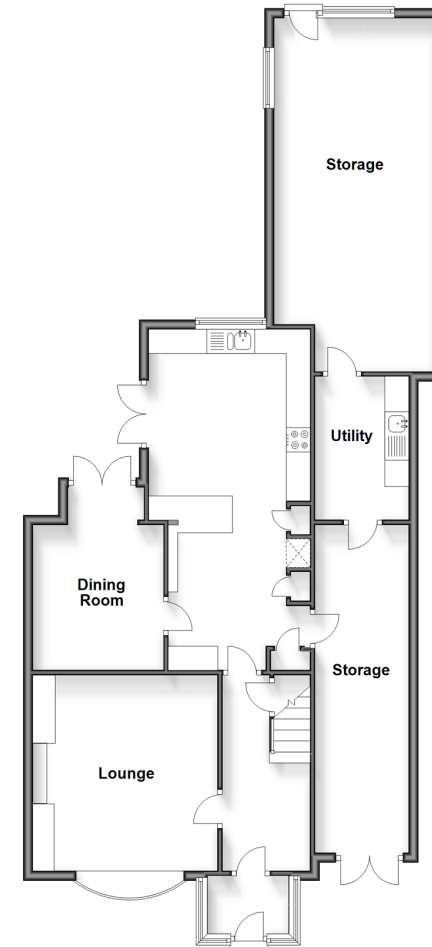
### FIRST FLOOR

- Landing
- Bedroom 1: 11'0 x 11'0 (3.36m x 3.36m)
- Bedroom 2: 10'0 x 8'11 (3.05m x 2.72m)
- Bedroom 3: 9'0 x 7'10 (2.75m x 2.39m)
- Bedroom 4: 8'0 x 8'0 (2.44m x 2.44m)
- Bathroom

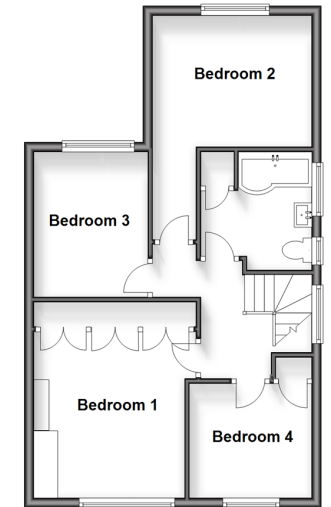
### OUTSIDE

- Rear Garden
- Front Garden
- Driveway
- Storage

Ground Floor  
Approx. 1100.0 sq. feet



First Floor  
Approx. 546.1 sq. feet



Call Maidstone - 01622 683737 ■ [wardsofkent.co.uk](http://wardsofkent.co.uk)

- Legal advice should be taken to verify fixtures/fittings, planning, alterations and/or lease details
- Appliances & services are untested, dimensions are approximate and floor plans are not to scale
- Through a Homewise Home For Life Plan people aged 60+ can secure this property for up to 59% less, by purchasing a Lifetime Lease.



13150860/20240914/CV/KW