



Guide Price
£450,000

Freehold

4x  2x  1x 

**Beaver Road, Allington,
Maidstone, Kent ME16**

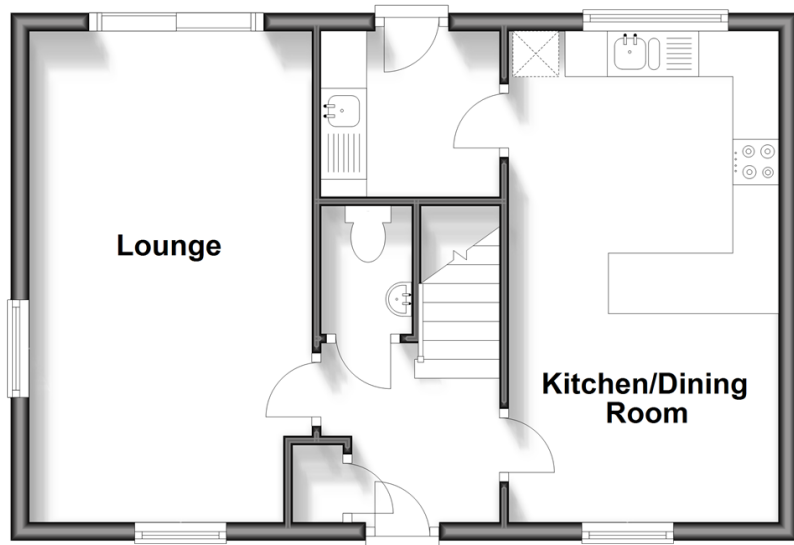
OVER 60?

Secure this property
for up to **59% less!**

Wards
Helping you move forwards

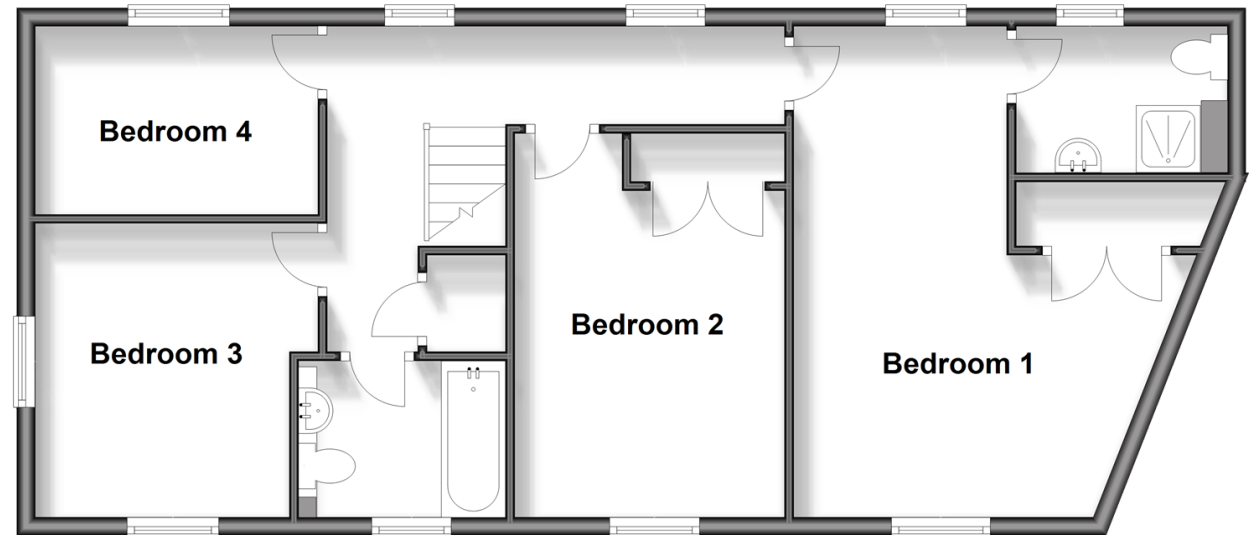
Ground Floor

Approx. 44.2 sq. metres (476.0 sq. feet)



First Floor

Approx. 68.0 sq. metres (732.4 sq. feet)



Accommodation

GROUND FLOOR

Entrance Hall
Cloakroom
Lounge: 17'7 x 10'0 (5.36m x 3.05m)
Kitchen/Dining Room: 17'6 x 9'7 (5.34m x 2.92m)
Utility Room: 6'4 x 5'10 (1.93m x 1.78m)

FIRST FLOOR

Landing
Bedroom 1: 17'7 (5.36m) x 13'8 (4.17m) narrowing to 7'7 (2.31m)
En-Suite Shower Room
Bedroom 2: 13'9 x 9'9 (4.19m x 2.97m)
Bedroom 3: 10'6 x 9'4 (3.20m x 2.85m)
Bedroom 4: 10'5 x 6'9 (3.18m x 2.06m)
Bathroom

OUTSIDE

Rear Garden
Front Garden
Car Port
Garage



Main features

- Deceptively spacious family house
- Set within a cul-de-sac located within Allington
- Fitted kitchen/dining room with a separate utility room and cloakroom
- Double glazing and central heating
- Ample off road parking via a car port and single garage



Nearest Schools

Primary Schools: Palace Wood Primary 0.7 miles, Allington Primary 0.7 miles, Brunswick House Primary 1.5 miles

Secondary Schools: Aylesford School - Sports College 1.8



Transport Information

Train Stations: Maidstone Barracks 1.8 miles, Barming 1.8 miles, Maidstone West 2.0 miles



Address

Beaver Road, Allington, Maidstone, Kent ME16



Directions

For directions to this property please contact us.



Wards
Helping you move forwards

Call Maidstone Branch 01622 683737 ■ wardsofkent.co.uk



- Legal advice should be taken to verify fixtures/fittings, planning, alterations and/or lease details
- Appliances & services are untested, dimensions are approximate and floor plans are not to scale
- Through a Homewise Home For Life Plan people aged 60+ can secure this property for up to 59% less, by purchasing a Lifetime Lease.



13156200/20250124/DS/DS