



**Price**  
**£235,000**

**Freehold**

2x  1x  2x 

**Well Road, Maidstone,  
Kent ME14**

**OVER 60?**

Secure this property  
for up to **59% less!**

*Wards*  
Helping you move forwards



## Main features

- Spacious feeling open plan interior
- Double chamber cellar
- Off road parking to rear
- No chain
- Very convenient location, close to station, shops and amenities

## Accommodation

### GROUND FLOOR

Hallway  
 Lounge/Diner: 23'3 x 11'6 (7.09m x 3.51m)  
 Kitchen: 8'7 x 7'3 (2.62m x 2.21m)

### BASEMENT

Cellar 1: 10'0 x 7'3 (3.05m x 2.21m)  
 Cellar 2: 10'4 x 10'2 (3.15m x 3.10m)

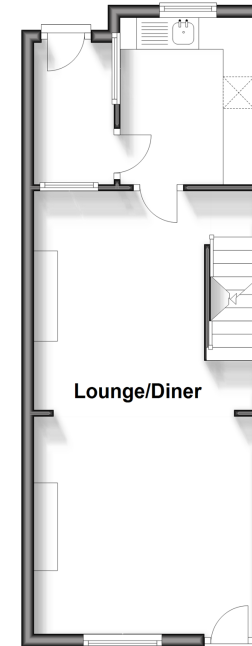
### FIRST FLOOR

Landing  
 Bedroom 1: 11'8 x 10'8 (3.56m x 3.25m)  
 Bedroom 2: 11'3 x 6'9 (3.43m x 2.06m)  
 Bathroom: 8'7 x 7'4 (2.62m x 2.24m)

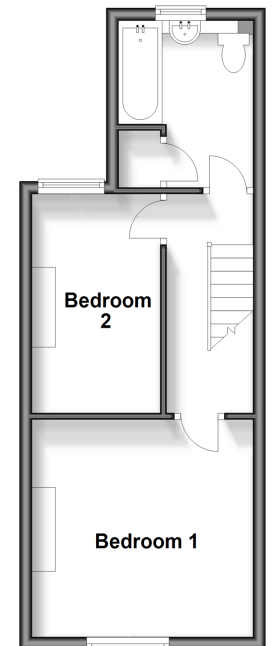
### OUTSIDE

Rear Garden  
 Parking To Rear

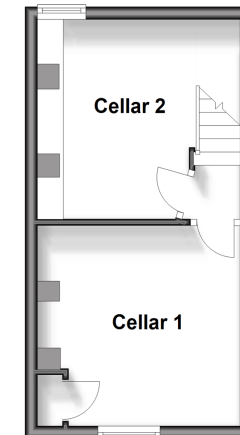
**Ground Floor**  
 Approx. 34.0 sq. metres (365.6 sq. feet)



**First Floor**  
 Approx. 30.9 sq. metres (333.0 sq. feet)



**Basement**  
 Approx. 20.9 sq. metres (225.3 sq. feet)



Call Maidstone - 01622 683737 ■ [wardsofkent.co.uk](http://wardsofkent.co.uk)

■ Legal advice should be taken to verify fixtures/fittings, planning, alterations and/or lease details  
 ■ Through a Homewise Home For Life Plan people aged 60+ can secure this property for up to 59% less, by purchasing a Lifetime Lease.

■ Appliances & services are untested, dimensions are approximate and floor plans are not to scale



13157280/20240925/CV/MB