



Price

£825,000

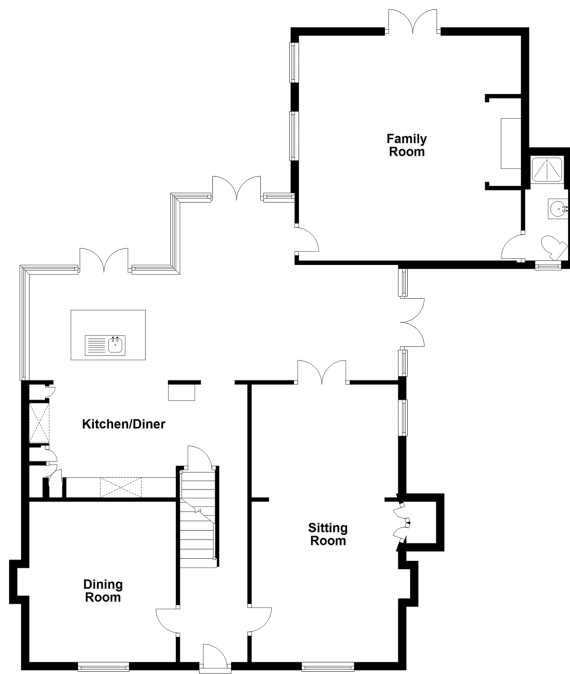
Freehold

4x  3x  3x 

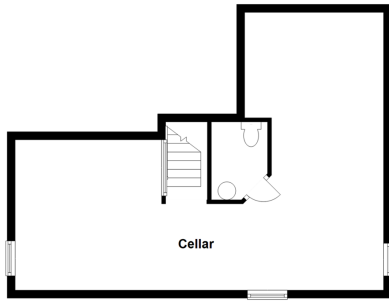
Church Road, Tovil,
Maidstone, Kent ME15

Wards
Helping you move forwards

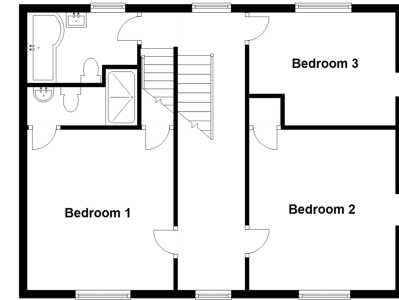
Ground Floor
Approx. 130.4 sq. metres (1403.4 sq. feet)



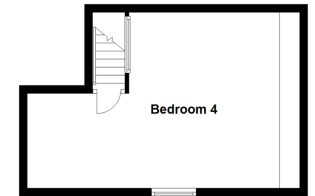
Basement
Approx. 46.5 sq. metres (500.6 sq. feet)



First Floor
Approx. 64.7 sq. metres (696.9 sq. feet)



Second Floor
Approx. 26.5 sq. metres (285.8 sq. feet)



Accommodation

GROUND FLOOR

Entrance Hall
Dining Room: 13'0 x 12'0 (3.97m x 3.66m)
Sitting Room : 22'8 x 12'1 (6.91m x 3.69m)
Kitchen/Diner: 29'6 x 22'5 (9.00m x 6.84m)
Family Room/ Old Bakery
Shower Room

FIRST FLOOR

Landing
Bedroom 1: 13'5 x 12'0 (4.09m x 3.66m)
En-Suite Shower Room
Bedroom 2: 13'5 x 12'2 (4.09m x 3.71m)
Bedroom 3: 12'0 x 9'3 (3.66m x 2.82m)
Bathroom

SECOND FLOOR

Bedroom 4: 14'1 x 14'1 (4.30m x 4.30m)

OUTSIDE

Rear Garden
Front Garden
Driveway

BASEMENT

Cellar: 28'0 x 22'6 (8.54m x 6.86m)



Main features

- Stunning Grade II listed, gated detached home
- Extended to make way for an extravagant kitchen/diner linking the house to The Old Bakery' room
- Bedrooms with beautiful period features
- Spacious basement, currently used as a utility/ storage room
- Generous driveway with parking for multiple vehicles



Nearest Schools

Primary Schools: Archbishop Courtenay Primary 0.6 miles, South Borough Primary 0.7 miles, Park Way Primary 1.1 miles

Secondary Schools: Maidstone Grammar School 0.9 miles



Transport Information

Train Stations: Maidstone West 1.1 miles, Maidstone Barracks 1.4 miles, Maidstone East 1.5 miles



Address

Church Road, Tovil, Maidstone, Kent ME15



Directions

For directions to this property please contact us.



Wards
Helping you move forwards

Call Maidstone Branch 01622 683737 ■ wardsof Kent.co.uk



■ Legal advice should be taken to verify fixtures/fittings, planning, alterations and/or lease details ■ Appliances & services are untested, dimensions are approximate and floor plans are not to scale



13156707/20230313/HS1/HS1