



**Guide Price**  
**£250,000**

**Freehold**

3x  2x  1x 

**Perryfield Street,  
Maidstone, Kent ME14**

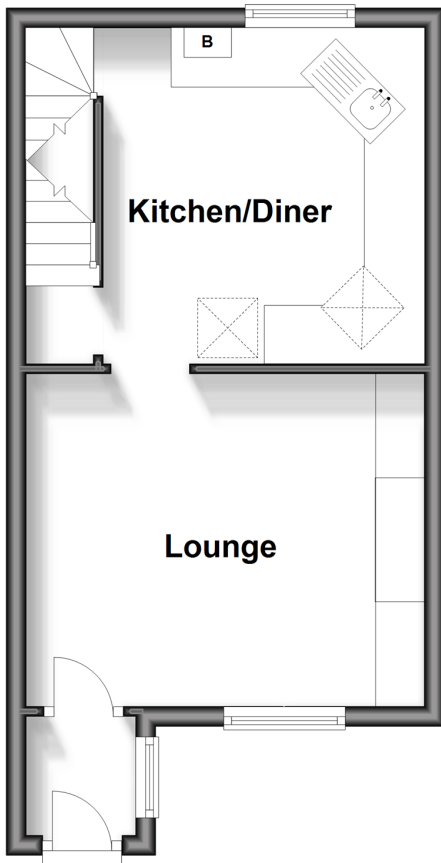
**OVER 60?**

Secure this property  
for up to **59% less!**

*Wards*  
Helping you move forwards

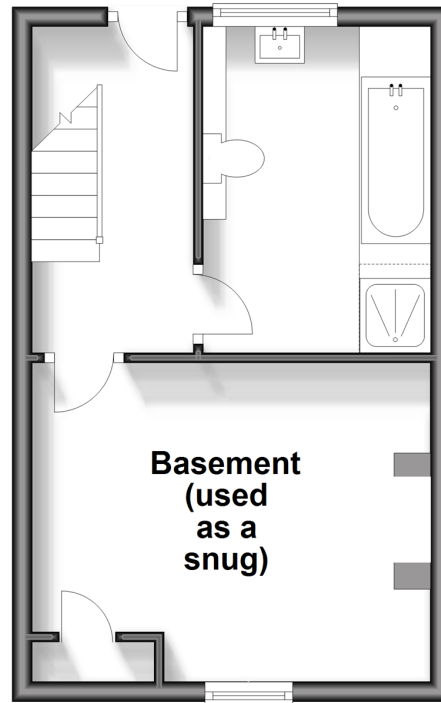
## Ground Floor

Approx. 29.0 sq. metres (312.7 sq. feet)



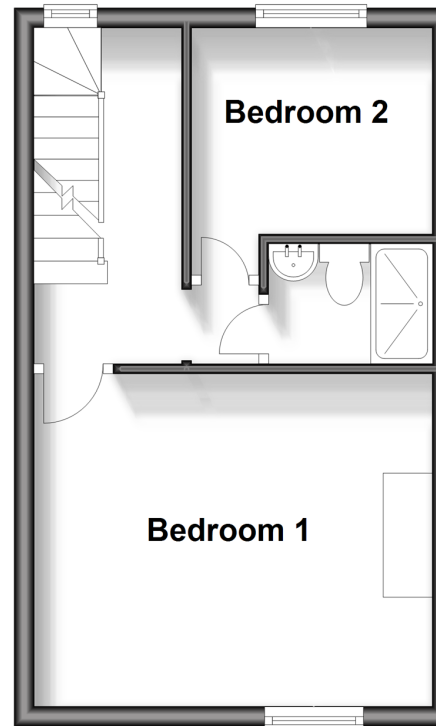
## Lower Ground Floor

Approx. 26.6 sq. metres (286.7 sq. feet)



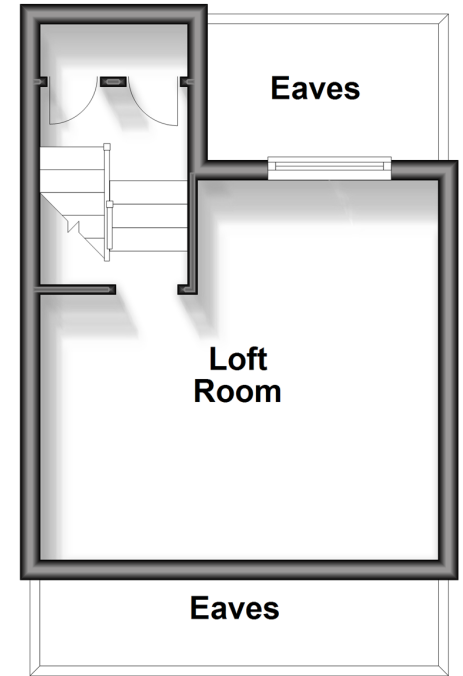
## First Floor

Approx. 27.9 sq. metres (299.9 sq. feet)



## Second Floor

Approx. 17.8 sq. metres (191.6 sq. feet)



## Accommodation

### GROUND FLOOR

Porch

Lounge: 13'0 x 11'0 (3.97m x 3.36m)

Kitchen/Diner: 11'0 x 10'0 (3.36m x 3.05m)

### LOWER-GROUND FLOOR

Hallway

Basement/Snug: 13'0 x 9'0 (3.97m x 2.75m)

Bathroom

### FIRST FLOOR

Landing

Bedroom 1: 12'0 x 11'0 (3.66m x 3.36m)

Bedroom 2: 8'0 x 6'10 (2.44m x 2.08m)

Shower Room

### SECOND FLOOR

Landing

Loft Room: 12'0 x 12'0 (3.66m x 3.66m)

### OUTSIDE

Rear Garden

Front Garden



## Main features

- Spacious house located on a popular residential road
- Sizeable bathroom with 4 piece suite
- Benefitting from a double chamber cellar currently set up as the bathroom and snug
- Generously sized garden perfect for entertaining
- Convenient location just a few minute's walk from the town centre



### Nearest Schools

Primary Schools: North Borough Junior School 0.3 miles, East Borough Primary 0.8 miles, Sandling Primary 0.9 miles

Secondary Schools: Invicta Grammar School 1.0 miles



### Transport Information

Train Stations: Maidstone East 0.4 miles, Maidstone West 1.0 miles, Maidstone Barracks 1.4 miles



### Address

Perryfield Street, Maidstone, Kent ME14



### Directions

For directions to this property please contact us.



*Wards*  
Helping you move forwards

Call Maidstone Branch 01622 683737 ■ [wardsof Kent.co.uk](http://wardsof Kent.co.uk)



- Legal advice should be taken to verify fixtures/fittings, planning, alterations and/or lease details
- Appliances & services are untested, dimensions are approximate and floor plans are not to scale
- Through a Homewise Home For Life Plan people aged 60+ can secure this property for up to 59% less, by purchasing a Lifetime Lease.



13157767/20240327/SS1/HS1