

OVER 60?

Secure this property
for up to **59% less!**



Price

£650,000

Freehold

5x  3x  3x 

Fullingpits Avenue, Maidstone, Kent ME16

Wards

Helping you move forwards



Main features

- **Stunning & spacious detached family house**
- **Benefiting from 2 reception rooms and additional study/ snug**
- **5 good size bedrooms with two having en-suites**
- **Modern garden lodge creating a great space for entertaining**
- **Excellent location just a short distance from schools, shops & Maidstone Hospital**

Accommodation

GROUND FLOOR

Hallway
 Lounge: 15'0 x 15'0 (4.58m x 4.58m)
 Study
 Cloakroom
 Dining Room: 12'0 x 10'10 (3.66m x 3.30m)
 Kitchen/Breakfast Room: 20'0 x 12'0 (6.10m x 3.66m)
 Utility Room

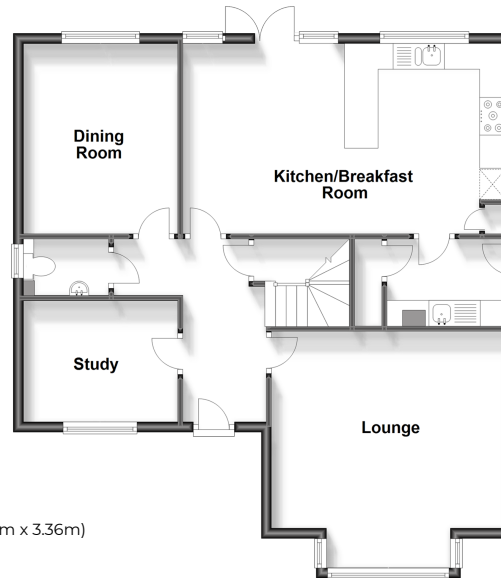
FIRST FLOOR

Landing
 Bedroom 1: 12'0 up to fitted wardrobes x 11'0 (3.66m x 3.36m)
 Dressing Area: 7'0 x 5'11 (2.14m x 1.80m)
 En-Suite Shower Room
 Bedroom 2: 12'0 x 9'0 (3.66m x 2.75m)
 En-Suite Shower Room
 Bedroom 3: 10'0 x 7'10 (3.05m x 2.39m)
 Bedroom 4: 9'11 x 8'10 (3.02m x 2.69m)
 Bedroom 5: 10'0 x 8'0 (3.05m x 2.44m)
 Bathroom

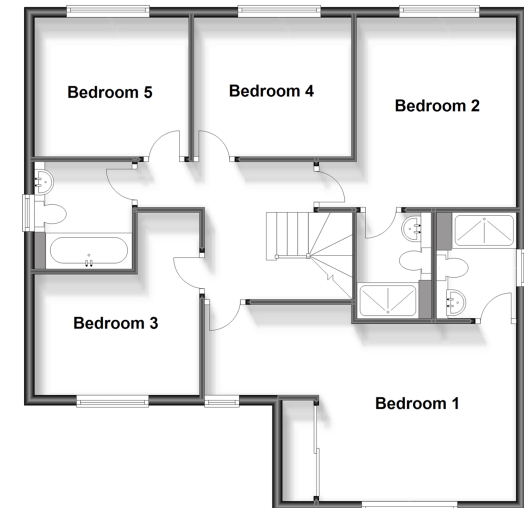
OUTSIDE

Rear Garden
 Garden Lodge: (L-shaped) 19'0 x 10'0 (5.80m x 3.05m) plus 12'0 x 11'0 (3.66m x 3.36m)
 Front Garden
 Driveway
 Double Garage

Ground Floor
 Approx. 80.2 sq. metres (863.8 sq. feet)



First Floor
 Approx. 78.9 sq. metres (849.3 sq. feet)



Call Maidstone - 01622 683737 ■ wardsof Kent.co.uk

■ Legal advice should be taken to verify fixtures/fittings, planning, alterations and/or lease details
 ■ Through a Homewise Home For Life Plan people aged 60+ can secure this property for up to 59% less, by purchasing a Lifetime Lease.

■ Appliances & services are untested, dimensions are approximate and floor plans are not to scale



13157881/20231030/HS1/HS1