

OVER 60?

Secure this property
for up to **59% less!**



Price

£500,000

Freehold

4x  2x  3x 

Langdale Rise, Maidstone, Kent ME16

Wards

Helping you move forwards



Main features

- **Extended family house**
- **Available with no chain**
- **Sought after location close to high performing schools**
- **Easy access for motorways, Barming station and the hospital**
- **Would benefit from being refurbished**

Accommodation

GROUND FLOOR

- Hallway
- Cloakroom
- Dining Room (Former Garage): 17'4 x 8'2 (5.29m x 2.49m)
- Lounge: 22'4 x 11'7 (6.81m x 3.53m)
- Kitchen: 12'4 x 6'8 (3.76m x 2.03m)
- Utility Room: 12'4 x 6'8 (3.76m x 2.03m)
- Breakfast Area: 10'7 x 10'3 (3.23m x 3.13m)

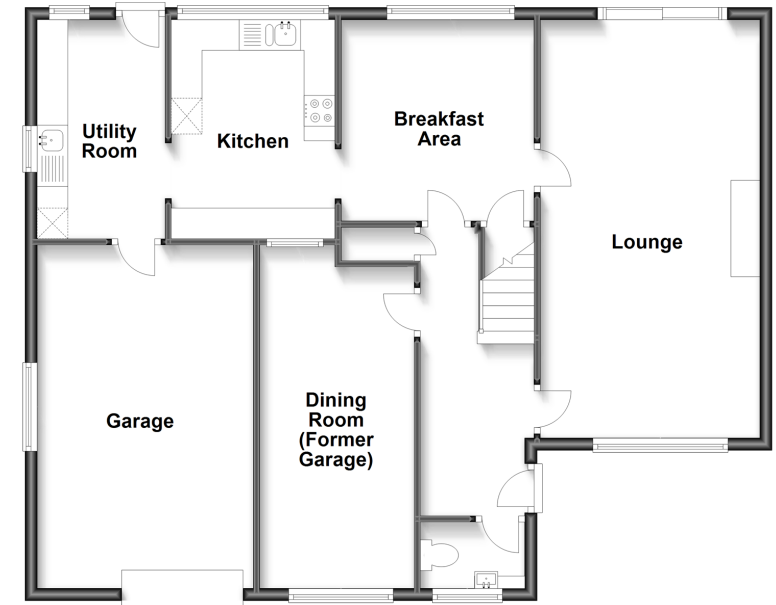
FIRST FLOOR

- Landing
- Bedroom 1: 12'7 x 11'7 (3.84m x 3.53m)
- En-Suite Shower Room
- Bedroom 2: 11'7 x 11'2 (3.53m x 3.41m)
- Bedroom 3: 11'7 x 9'10 (3.53m x 3.00m)
- Bedroom 4: 9'10 x 8'5 (3.00m x 2.57m)
- Bathroom

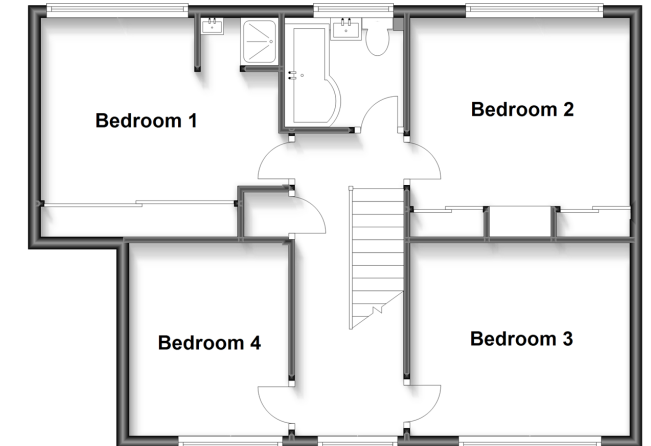
OUTSIDE

- Rear Garden
- Front Garden
- Driveway
- Garage: 17'5 x 11'10 (5.31m x 3.61m)

Ground Floor
Approx. 100.5 sq. metres (1081.9 sq. feet)



First Floor
Approx. 60.9 sq. metres (655.4 sq. feet)



Call Maidstone - 01622 683737 ■ wardsofkent.co.uk

- Legal advice should be taken to verify fixtures/fittings, planning, alterations and/or lease details
- Appliances & services are untested, dimensions are approximate and floor plans are not to scale
- Through a Homewise Home For Life Plan people aged 60+ can secure this property for up to 59% less, by purchasing a Lifetime Lease.



13157512/20230526/JH/MB