

OVER 60?

Secure this property
for up to **59% less!**



Price
£625,000
Freehold

4x  2x  3x 

Copper Tree Court, Maidstone, Kent, ME15

Wards
Helping you move forwards



Main features

- Tucked away on a generous plot at the end of a cul de sac
- Generous size study
- Thoughtfully extended offering vast and flexible accommodation
- Short walk to sought after Loose Primary School & local shops
- NO FORWARD CHAIN

Accommodation

GROUND FLOOR

Entrance Porch
Hallway
Downstairs Cloakroom: 5'1 x 3'1 (1.55m x 0.94m)
Lounge: 16'1 x 13'1 (4.91m x 3.99m)
Family Area: 11'1 x 8'0 (3.38m x 2.44m)
Kitchen/Breakfast Room: 14'1 x 11'1 (4.30m x 3.38m)
Study: 16'1 x 8'1 (4.91m x 2.47m)
Snug: 8'1 x 8'1 (2.47m x 2.47m)
Dining Room: 14'0 x 9'0 (4.27m x 2.75m)
Conservatory: 16'0 x 11'1 (4.88m x 3.38m)

FIRST FLOOR

Landing
Bedroom 1: 17'0 x 13'1 (5.19m x 3.99m)
En Suite Shower Room: 8'1 x 5'1 (2.47m x 1.55m)
Bedroom 2: 14'1 x 10'0 (4.30m x 3.05m)
Bedroom 3: 12'0 x 9'0 (3.66m x 2.75m)
Bedroom 4: 11'1 x 9'0 (3.38m x 2.75m)
Bathroom: 8'0 x 6'0 (2.44m x 1.83m)

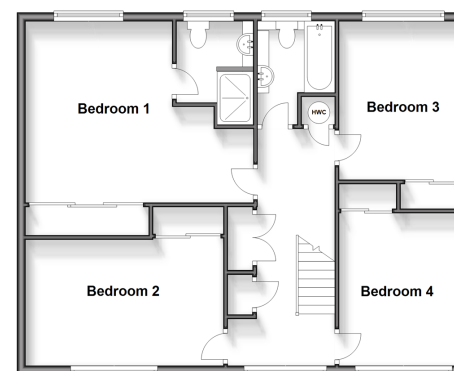
OUTSIDE

Double Garage and Driveway
Front and Rear Gardens
Summer House
Greenhouse

Ground Floor
Approx. 133.9 sq. metres (1441.4 sq. feet)



First Floor
Approx. 78.7 sq. metres (846.7 sq. feet)



Call Loose - 01622 744067 ■ wardsofkent.co.uk

- Legal advice should be taken to verify fixtures/fittings, planning, alterations and/or lease details
- Appliances & services are untested, dimensions are approximate and floor plans are not to scale
- Through a Homewise Home For Life Plan people aged 60+ can secure this property for up to 59% less, by purchasing a Lifetime Lease.



13021994/20250214/AT/VMK