



Guide Price
£350,000

Freehold

2x  1x  1x 

**Gresham Road,
Coxheath, Maidstone,
Kent, ME17**

OVER 60?

Secure this property
for up to **59% less!**

Wards
Helping you move forwards



Main features

- **Quiet location in popular Coxheath village**
- **Private and secure rear garden**
- **Garage and ample off road parking**
- **Short walk to local shops and amenities**
- **NO FORWARD CHAIN**

Accommodation

GROUND FLOOR

Entrance Hall
 Lounge/Diner: 18'1 x 11'1 (5.52m x 3.38m)
 Kitchen/Breakfast Room: 11'1 x 10'0 (3.38m x 3.05m)
 Bedroom 1: 13'0 x 11'0 (3.97m x 3.36m)
 Bedroom 2: 11'0 x 9'2 (3.36m x 2.80m)
 Bathroom: 8'0 x 5'1 (2.44m x 1.55m)

OUTBUILDING

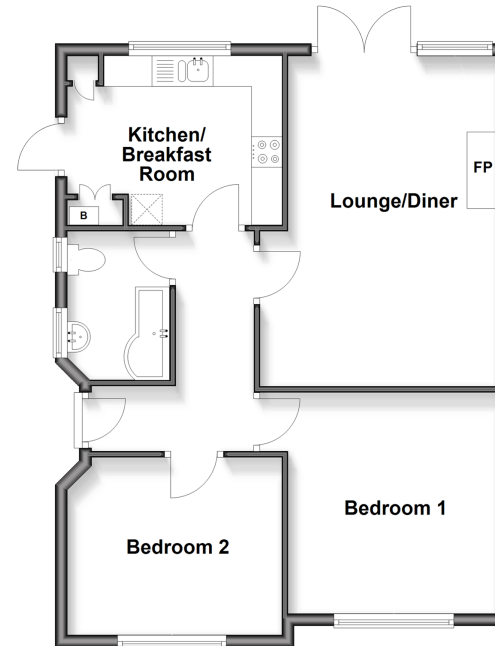
Garage

OUTSIDE

Driveway
 Front and Rear Gardens

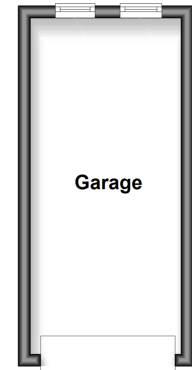
Ground Floor

Approx. 64.7 sq. metres (696.3 sq. feet)



Outbuilding

Approx. 13.5 sq. metres (145.5 sq. feet)



Call Loose - 01622 744067 ■ wardsofkent.co.uk

■ Legal advice should be taken to verify fixtures/fittings, planning, alterations and/or lease details
 ■ Through a Homewise Home For Life Plan people aged 60+ can secure this property for up to 50% less, by purchasing a Lifetime Lease

■ Appliances & services are untested, dimensions are approximate and floor plans are not to scale