



**Price**  
**£350,000**

**Freehold**

3x  1x  2x 

**Park Way, Coxheath,  
Maidstone, Kent, ME17**

**OVER 60?**

Secure this property  
for up to **59% less!**

*Wards*  
Helping you move forwards



## Main features

- Thoughtfully extended providing spacious accommodation, offering the fantastic opportunity to redecorate and create your dream home
- Large rear garden, perfect for the summer months
- Garage and ample off road parking
- Popular village location, short walk to local shops, amenities and sought after Coxheath Primary School
- NO FORWARD CHAIN

## Accommodation

### GROUND FLOOR

Entrance Porch  
 Downstairs Cloakroom: 6'0 x 3'0 (1.83m x 0.92m)  
 Hallway  
 Lounge: 12'1 x 11'1 (3.69m x 3.38m)  
 Dining Room: 10'1 x 9'1 (3.08m x 2.77m)  
 Conservatory: 8'1 x 6'1 (2.47m x 1.86m)  
 Kitchen: 10'0 x 8'1 (3.05m x 2.47m)  
 Utility Room: 8'1 x 7'0 (2.47m x 2.14m)

### FIRST FLOOR

Landing  
 Bedroom 1: 12'0 x 11'0 (3.66m x 3.36m)  
 Bedroom 2: 11'1 x 11'1 (3.38m x 3.38m)  
 Bedroom 3: 8'0 x 7'0 (2.44m x 2.14m)  
 Bathroom: 5'1 x 5'0 (1.55m x 1.53m)  
 Separate Toilet: 6'1 x 2'1 (1.86m x 0.64m)

### OUTBUILDING

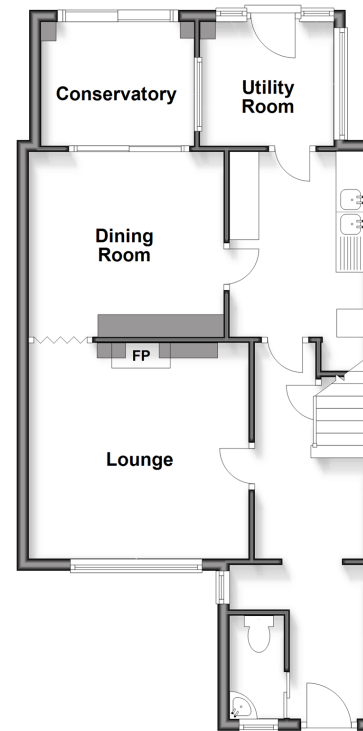
Garage  
 Store Room

### OUTSIDE

Driveway  
 Front and Rear Gardens  
 Greenhouse

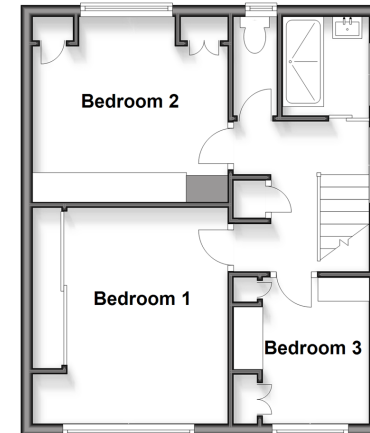
### Ground Floor

Approx. 57.1 sq. metres (615.1 sq. feet)



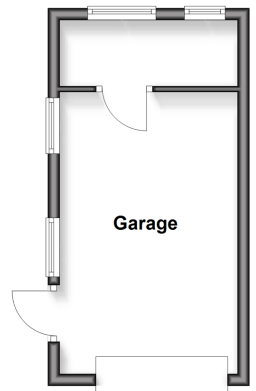
### First Floor

Approx. 39.5 sq. metres (424.8 sq. feet)



### Outbuilding

Approx. 18.3 sq. metres (197.3 sq. feet)



Call Loose - 01622 744067 ■ [wardsofkent.co.uk](http://wardsofkent.co.uk)

- Legal advice should be taken to verify fixtures/fittings, planning, alterations and/or lease details
- Through a Homewise Home For Life Plan people aged 60+ can secure this property for up to 50% less, by purchasing a Lifetime Lease.

- Appliances & services are untested, dimensions are approximate and floor plans are not to scale



13022093/20250910/AS/AS