



**Guide Price**  
**£365,000**

**Freehold**

2x  1x  1x 

**Gresham Road,  
Coxheath, Maidstone,  
Kent, ME17**

**OVER 60?**

Secure this property  
for up to **59% less!**

*Wards*  
Helping you move forwards





## Main features

- Well presented throughout, with a beautifully landscaped rear garden
- Garage and driveway with ample off road parking
- Ideal for those looking to downsize to a well equipped and spacious bungalow
- Popular village location, short walk to local shops, bus stop and amenities
- NO FORWARD CHAIN

## Accommodation

### GROUND FLOOR

Entrance Porch  
Hallway  
Kitchen: 11'1 x 9'1 (3.38m x 2.77m)  
Lounge/Diner: 18'1 x 11'1 (5.52m x 3.38m)  
Bedroom 1: 13'0 x 11'0 (3.97m x 3.36m)  
Bedroom 2: 11'1 x 9'1 (3.38m x 2.77m)  
Wet Room: 8'0 x 5'1 (2.44m x 1.55m)

### OUTBUILDING

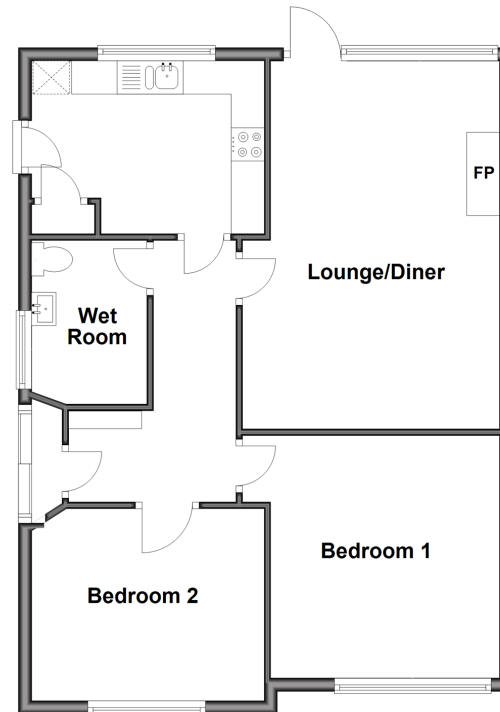
Garage

### OUTSIDE

Driveway  
Front and Rear Gardens

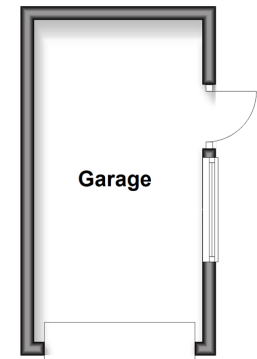
### Ground Floor

Approx. 67.0 sq. metres (720.9 sq. feet)



### Outbuilding

Approx. 12.4 sq. metres (133.1 sq. feet)



Call Loose - 01622 744067 ■ [wardsofkent.co.uk](http://wardsofkent.co.uk)

■ Legal advice should be taken to verify fixtures/fittings, planning, alterations and/or lease details  
■ Through a Homewise Home For Life Plan people aged 60+ can secure this property for up to 50% less, by purchasing a Lifetime Lease.

■ Appliances & services are untested, dimensions are approximate and floor plans are not to scale



13022278/20251002/VMK/AS