



Price
£215,000

Leasehold

2x  1x  1x 

**The Gardens, Stockett
Lane, Coxheath,
Maidstone, Kent, ME17**

OVER 60?

Secure this property
for up to **59% less!**

Wards
Helping you move forwards



Main features

- Ground floor maisonette with double bedrooms
- Garage to the rear
- Situated in the popular village of Coxheath
- Just a short walk to local shops, scenic countryside and Coxheath Primary School
- Benefiting from a secure and private rear garden, ideal for those looking for outdoor space

Accommodation

GROUND FLOOR

Entrance Hall

Kitchen: 9'0 x 7'0 (2.75m x 2.14m)

Lounge: 14'0 x 10'0 (4.27m x 3.05m)

Bedroom 1: 12'0 x 10'1 (3.66m x 3.08m)

Bedroom 2: 11'1 x 7'2 (3.38m x 2.19m)

Shower Room: 6'0 x 6'0 (1.83m x 1.83m)

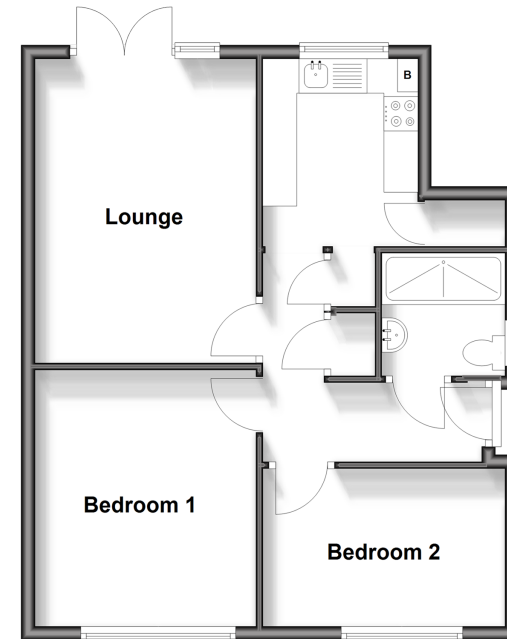
OUTSIDE

Garage

Rear Garden

Ground Floor

Approx. 53.9 sq. metres (579.8 sq. feet)



Call Loose - 01622 744067 ■ wardsofkent.co.uk

■ Legal advice should be taken to verify fixtures/fittings, planning, alterations and/or lease details
 ■ Through a Homewise Home For Life Plan people aged 60+ can secure this property for up to 59% less, by purchasing a Lifetime Lease.

■ Appliances & services are untested, dimensions are approximate and floor plans are not to scale



13022184/20250522/KIR/AS