



Price
£650,000

Freehold

5x  2x  2x 

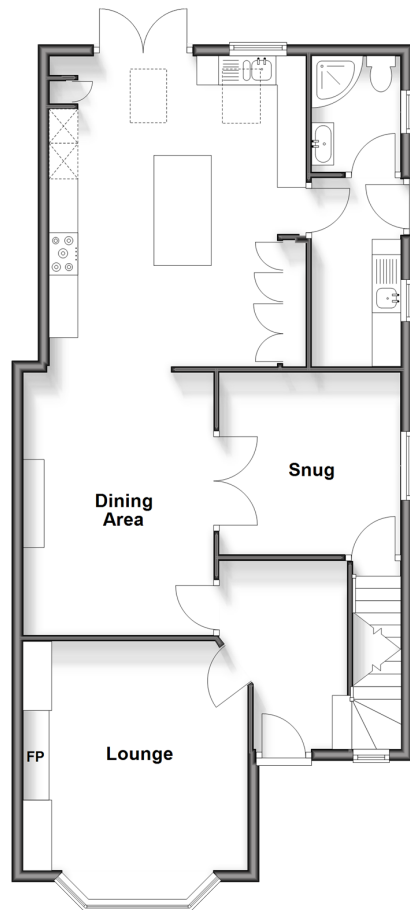
**Loose Road, Loose,
Maidstone, Kent, ME15**

OVER 60?

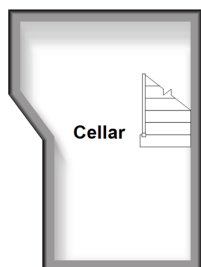
Secure this property
for up to **59% less!**

Wards
Helping you move forwards

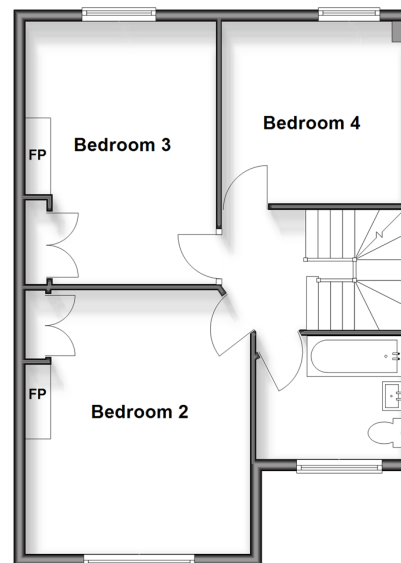
Ground Floor
Approx. 85.0 sq. metres (915.0 sq. feet)



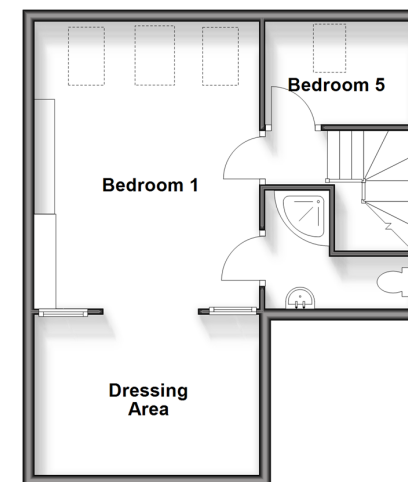
Basement
Approx. 10.7 sq. metres (115.0 sq. feet)



First Floor
Approx. 56.3 sq. metres (605.8 sq. feet)



Second Floor
Approx. 43.7 sq. metres (470.3 sq. feet)



Accommodation

GROUND FLOOR

Entrance Hall
Lounge: 14'1" x 11'1" (4.30m x 3.38m)
Snug: 10'1" x 10'1" (3.08m x 3.08m)
Dining Area: 15'0" x 11'0" (4.58m x 3.36m)
Kitchen: 17'1" x 14'1" (5.21m x 4.30m)
Utility Room: 11'0" x 5'0" (3.36m x 1.53m)
Shower Room: 6'1" x 5'1" (1.86m x 1.55m)

BASEMENT

Cellar: 13'0" x 8'0" (3.97m x 2.44m)

FIRST FLOOR

Landing
Bedroom 2: 14'1" x 13'1" (4.30m x 3.99m)
Bedroom 3: 14'1" x 9'1" (4.30m x 2.77m)
Bedroom 4: 10'1" x 10'0" (3.08m x 3.05m)
Bathroom: 8'1" x 7'0" (2.47m x 2.14m)

SECOND FLOOR

Landing
Bedroom 1: 25'1" x 12'1" (7.65m x 3.69m)
Dressing Area: 9'1" x 9'1" (2.77m x 2.77m)
En Suite Shower Room: 8'0" x 6'1" (2.44m x 1.86m)
Bedroom 5: 8'1" x 5'1" (2.47m x 1.55m)

OUTSIDE

Rear Garden
Off Road Parking
Shed



Main features

- Stunning Edwardian family home with a wealth of period features
- Sympathetically renovated by the current owners to a high standard
- Superb kitchen extension to the rear, creating a superb open plan entertaining space
- Spacious accommodation spread over 4 floors
- Short walk to sought after Loose Primary School, local shops and amenities



Nearest Schools

Primary Schools: Loose Primary 0.3 miles, Tiger Primary 0.8 miles
 Secondary Schools: New Line Learning Academy 0.8 miles, Cornwallis Academy 1.8 miles, Maidstone Grammar School 1.9 miles, St Simon Stock Catholic School 2.1 miles



Transport Information

Train Stations: Maidstone West 2.3 miles, Maidstone Barracks 2.6 miles, Maidstone East 2.7 miles



Address

Loose Road, Loose, Maidstone, Kent, ME15



Directions

For directions to this property please contact us.



Call Loose Branch 01622 744067 ■ wardsofkent.co.uk



- Legal advice should be taken to verify fixtures/fittings, planning, alterations and/or lease details
- Appliances & services are untested, dimensions are approximate and floor plans are not to scale
- Through a Homewise Home For Life Plan people aged 60+ can secure this property for up to 59% less, by purchasing a Lifetime Lease.



13022169/20250408/TT/AS