



Price
£465,000

Freehold

4x  3x  1x 

**Lasius Drive, Coxheath,
Maidstone, Kent, ME17**

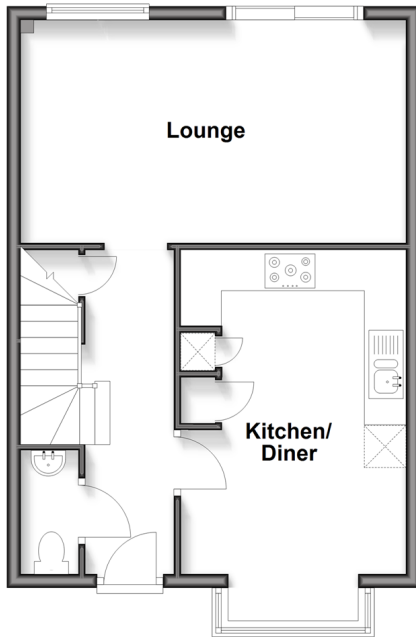
OVER 60?

Secure this property
for up to **59% less!**

Wards
Helping you move forwards

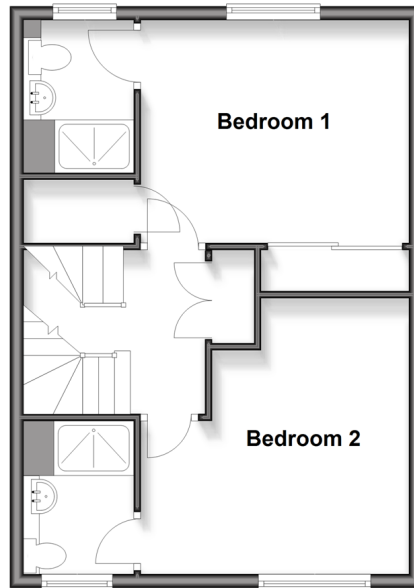
Ground Floor

Approx. 46.1 sq. metres (495.9 sq. feet)



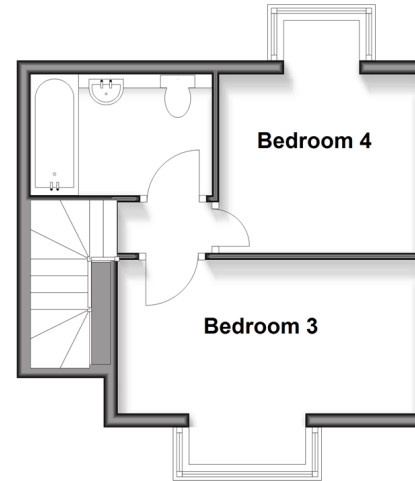
First Floor

Approx. 45.4 sq. metres (489.0 sq. feet)



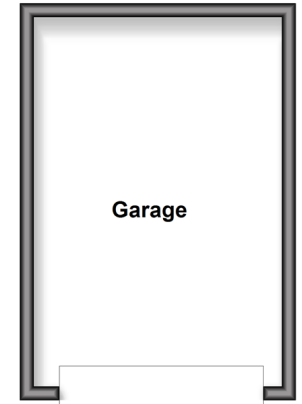
Second Floor

Approx. 28.0 sq. metres (301.0 sq. feet)



Outbuilding

Approx. 19.5 sq. metres (210.2 sq. feet)



Accommodation

GROUND FLOOR

Entrance Hall
Downstairs Cloakroom: 5'1 x 2'1 (1.55m x 0.64m)
Kitchen/Diner: 18'0 x 10'1 (5.49m x 3.08m)
Lounge: 18'1 x 10'1 (5.52m x 3.08m)

FIRST FLOOR

Landing
Bedroom 1: 13'0 x 12'1 (3.97m x 3.69m)
En Suite Shower Room 1: 7'1 x 5'0 (2.16m x 1.53m)
Bedroom 2: 13'0 x 12'1 (3.97m x 3.69m)
En Suite Shower Room 2: 7'0 x 5'1 (2.14m x 1.55m)

SECOND FLOOR

Landing
Bedroom 3: 13'0 x 9'1 (3.97m x 2.77m)
Bedroom 4: 13'1 x 10'0 (3.99m x 3.05m)
Bathroom: 8'1 x 5'1 (2.47m x 1.55m)

OUTBUILDING

Garage

OUTSIDE

Driveway
Front and Rear Gardens



Main features

- Spacious and modern family home spread over 3 floors, with a garage and driveway
- Large and enclosed rear garden, perfect for the summer months
- Situated in the popular village of Coxheath, with picturesque countryside a walk away
- Short walk to Coxheath Primary School, local shops and amenities
- NO FORWARD CHAIN



Nearest Schools

Primary Schools: Coxheath Primary 0.3 miles, Loose Primary 0.9 miles, East Farleigh Primary 1.1 miles
Secondary Schools: Cornwallis Academy 0.7 miles, Oakwood Park Grammar School 2.3 miles, St Augustine Academy 2.3 miles



Transport Information

Train Stations: East Farleigh 2.1 miles, Maidstone West 2.4 miles, Maidstone Barracks 2.9 miles



Address

Lasius Drive, Coxheath, Maidstone, Kent, ME17



Directions

For directions to this property please contact us.



Wards
Helping you move forwards

Call Loose Branch 01622 744067 ■ wardsofkent.co.uk



■ Legal advice should be taken to verify fixtures/fittings, planning, alterations and/or lease details ■ Appliances & services are untested, dimensions are approximate and floor plans are not to scale
■ Through a Homewise Home For Life Plan people aged 60+ can secure this property for up to 59% less, by purchasing a Lifetime Lease.



13022131/20250320/LM/AS