



**Price**  
**£450,000**

**Freehold**

3x  2x  1x 

**Lasius Drive, Coxheath,  
Maidstone, Kent, ME17**

**OVER 60?**

Secure this property  
for up to **59% less!**

*Wards*  
Helping you move forwards





## Main features

- **Spacious and immaculate family home, with multiple upgrades throughout**
- **Newly built in 2020, with remainder of new build warranty**
- **Popular village location, with picturesque countryside on your doorstep**
- **Lovely enclosed rear garden, with an outbuilding/home office**
- **Short walk to the village centre, with it's local shops, amenities, primary school and bus stop**

## Accommodation

### GROUND FLOOR

Entrance Hall  
Downstairs Cloakroom  
Kitchen: 11'1 x 9'1 (3.38m x 2.77m)  
Lounge/Diner: 17'0 x 16'1 (5.19m x 4.91m)

### FIRST FLOOR

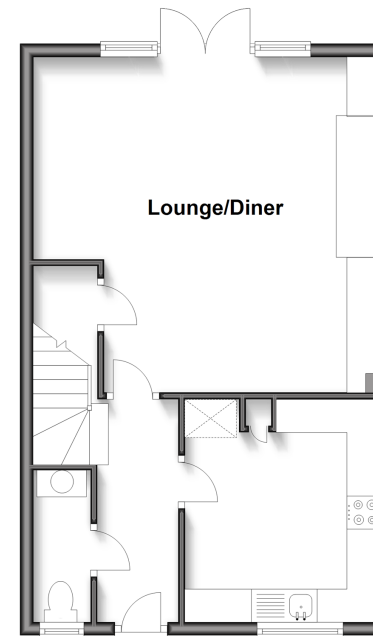
Landing  
Bedroom 1: 10'1 x 10'1 (3.08m x 3.08m)  
En Suite Shower Room  
Bedroom 2: 10'0 x 9'1 (3.05m x 2.77m)  
Bedroom 3: 10'0 x 7'0 (3.05m x 2.14m)  
Bathroom

### OUTSIDE

Front and Rear Gardens  
Off Road Parking  
Outbuilding/Home Office: 13'0 x 8'0 (3.97m x 2.44m)  
Outbuilding/Storage: 8'0 x 6'0 (2.44m x 1.83m)

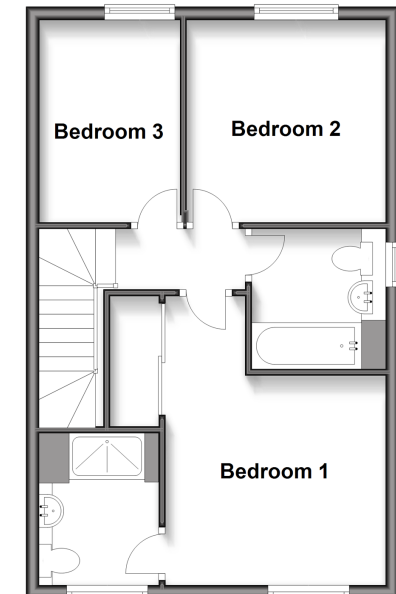
### Ground Floor

Approx. 45.1 sq. metres (485.1 sq. feet)



### First Floor

Approx. 45.1 sq. metres (485.9 sq. feet)



**Call Loose - 01622 744067 ■ [wardsofkent.co.uk](http://wardsofkent.co.uk)**

■ Legal advice should be taken to verify fixtures/fittings, planning, alterations and/or lease details  
■ Through a Homewise Home For Life Plan people aged 60+ can secure this property for up to 59% less, by purchasing a Lifetime Lease.

■ Appliances & services are untested, dimensions are approximate and floor plans are not to scale



13021667/20250205/KIR/AS