



Price
£560,000

Freehold

2x  1x  1x 

**Salts Lane, Loose,
Maidstone, Kent, ME15**

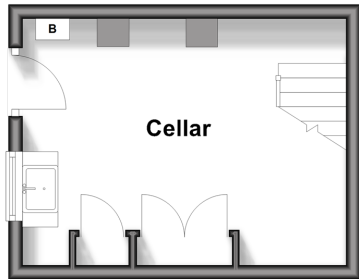
OVER 60?

Secure this property
for up to **59% less!**

Wards
Helping you move forwards

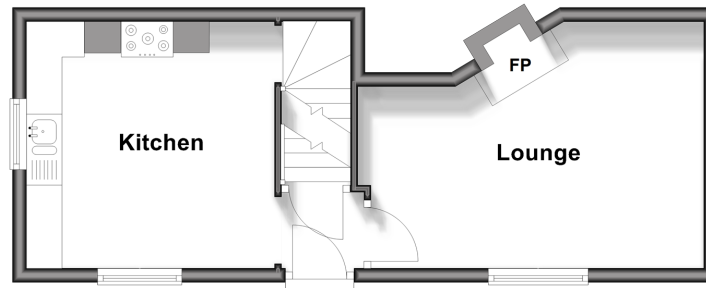
Basement

Approx. 15.8 sq. metres (170.6 sq. feet)



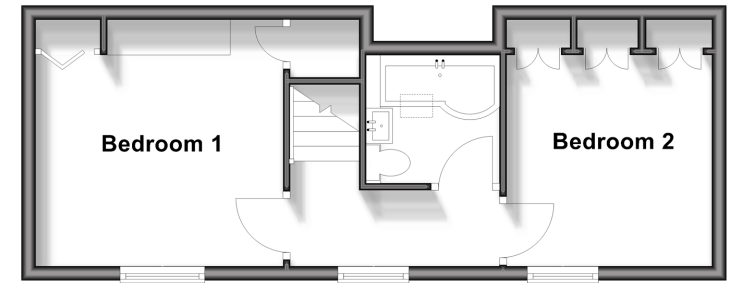
Ground Floor

Approx. 31.1 sq. metres (334.6 sq. feet)



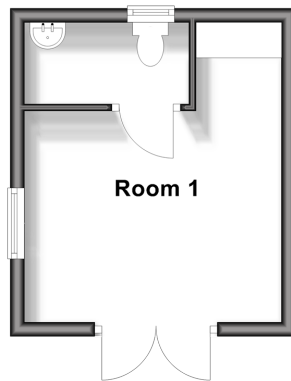
First Floor

Approx. 32.1 sq. metres (345.4 sq. feet)



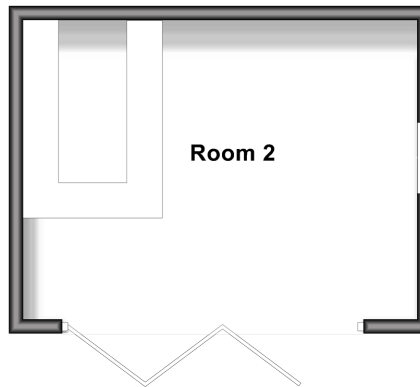
Outbuilding

Approx. 15.3 sq. metres (164.9 sq. feet)



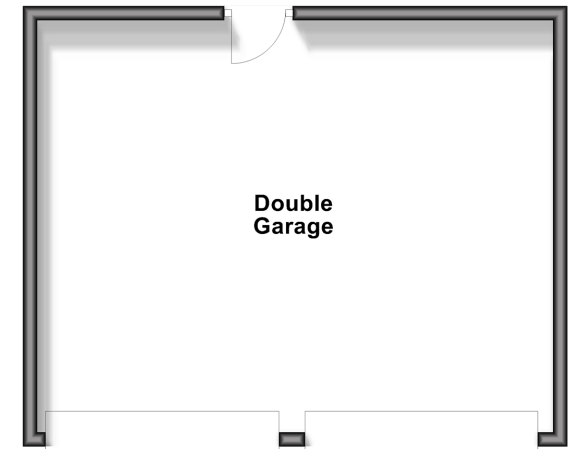
Outbuilding 2

Approx. 23.5 sq. metres (252.6 sq. feet)



Outbuilding 3

Approx. 42.3 sq. metres (455.2 sq. feet)



Accommodation

GROUND FLOOR

Entrance Hall

Lounge: 16'0 x 12'1 (4.88m x 3.69m)

Kitchen: 11'1 x 11'1 (3.38m x 3.38m)

BASEMENT

Cellar: 14'1 x 10'1 (4.30m x 3.08m)

FIRST FLOOR

Landing

Bedroom 1: 12'0 x 11'1 (3.66m x 3.38m)

Bedroom 2: 9'1 x 9'1 (2.77m x 2.77m)

Bathroom: 6'1 x 6'0 (1.86m x 1.83m)

OUTBUILDING

Room 1: 13'1 x 11'1 (3.99m x 3.38m)

Cloakroom: 7'1 x 4'0 (2.16m x 1.22m)

OUTBUILDING 2

Room 2: 18'0 x 13'1 (5.49m x 3.99m)

OUTBUILDING 3

Double Garage

OUTSIDE

Driveway

Front and Side Gardens



Main features

- Charming 19th century Ragstone character cottage, with a wealth of period features
- Large, private and secure rear garden
- Double garage with driveway for multiple cars
- Multiple outbuildings currently being utilised as a home office and garden bar
- Situated in the popular village of Loose, just a short walk to the village pub and the picturesque Loose Valley conservation area



Nearest Schools

Primary Schools: Loose Primary 0.5 miles, Boughton Monchelsea Primary 1.3 miles
Secondary Schools: Cornwallis Academy 0.7 miles, Maidstone Grammar School 2.7 miles, Maidstone Grammar School for Girls 2.7 miles



Transport Information

Train Stations: Maidstone West 3.1 miles, East Farleigh 3.2 miles, Maidstone Barracks 3.4 miles, Marden 5.6 miles



Address

Salts Lane, Loose, Maidstone, Kent, ME15



Directions

For directions to this property please contact us.



Wards
Helping you move forwards

Call Loose Branch 01622 744067 ■ wardsofkent.co.uk



■ Legal advice should be taken to verify fixtures/fittings, planning, alterations and/or lease details ■ Appliances & services are untested, dimensions are approximate and floor plans are not to scale
■ Through a Homewise Home For Life Plan people aged 60+ can secure this property for up to 59% less, by purchasing a Lifetime Lease.



13021390/20250217/AT/AS