



Price
£350,000

Freehold

3x  1x  1x 

**Pembroke Road,
Coxheath, Maidstone,
Kent, ME17**

OVER 60?

Secure this property
for up to **59% less!**

Wards
Helping you move forwards



Main features

- Well presented throughout
- Parking for multiple cars
- Bright and airy interior
- Situated in the popular village of Coxheath short walk to local shops, primary school and amenities
- Planning permission granted for single storey wrap-around extension (planning number PP/12784754V1)

Accommodation

GROUND FLOOR

Entrance Hall

Downstairs Cloakroom: 6'0 x 3'0 (1.83m x 0.92m)

Lounge: 15'1 x 14'0 (4.60m x 4.27m)
narrowing to 8'10 x 10'0 (2.69m x 3.05m)

Kitchen: 13'0 x 8'1 (3.97m x 2.47m)

FIRST FLOOR

Landing

Bedroom 1: 14'1 x 8'1 (4.30m x 2.47m)

Bedroom 2: 14'0 x 9'0 (4.27m x 2.75m)

Bedroom 3: 10'1 x 10'0 (3.08m x 3.05m)

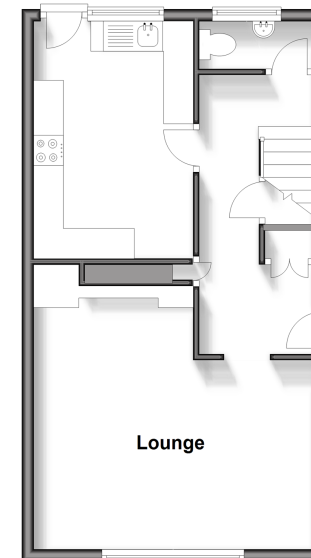
Bathroom: 7'1 x 6'0 (2.16m x 1.83m)

OUTSIDE

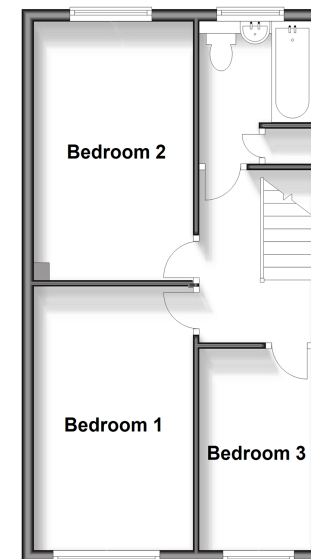
Off-Road Parking

Rear Garden

Ground Floor
Approx. 41.0 sq. metres (441.5 sq. feet)



First Floor
Approx. 41.8 sq. metres (450.4 sq. feet)



Call Loose - 01622 744067 ■ wardsof Kent.co.uk

- Legal advice should be taken to verify fixtures/fittings, planning, alterations and/or lease details
- Appliances & services are untested, dimensions are approximate and floor plans are not to scale
- Through a Homewise Home For Life Plan people aged 60+ can secure this property for up to 59% less, by purchasing a Lifetime Lease.



13019937/20250512/AT/AS