



Guide Price
£350,000

Freehold

3x  1x  1x 

**Whitebeam Drive,
Coxheath, Maidstone,
Kent, ME17**

OVER 60?

Secure this property
for up to **59% less!**

Wards
Helping you move forwards



Main features

- Open plan kitchen/diner, sure to become the hub of the home
- Mature and private rear garden, ideal for the summer months
- Well presented throughout
- Detached garage and driveway to the rear
- Popular village location, short walk to local shops, amenities and Coxheath Primary School

Accommodation

GROUND FLOOR

Entrance Hall

Lounge: 14'3 x 14'3 (4.35m x 4.35m)

Kitchen/Diner: 17'4 x 9'0 (5.29m x 2.75m)

FIRST FLOOR

Landing

Bedroom 1: 12'3 x 11'5 (3.74m x 3.48m)

Bedroom 2: 11'2 x 8'9 (3.41m x 2.67m)

Bedroom 3: 8'10 x 7'6 (2.69m x 2.29m)

Shower Room: 7'5 x 5'8 (2.26m x 1.73m)

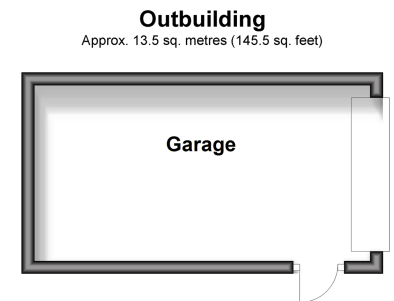
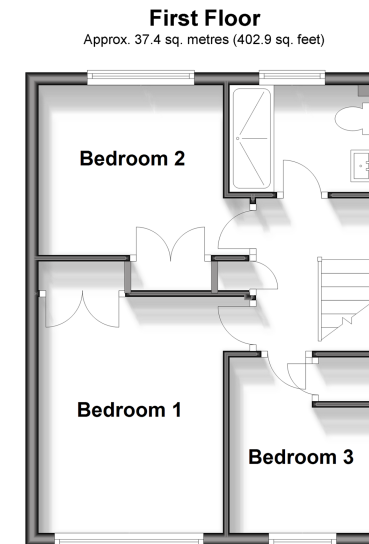
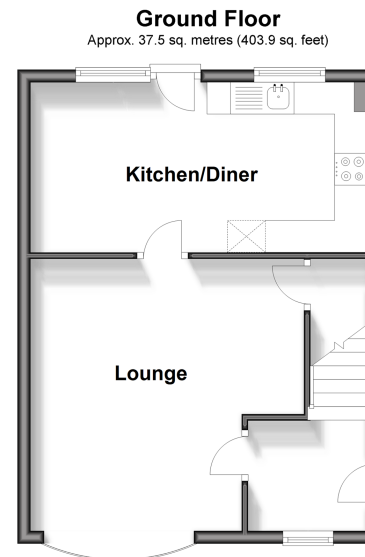
OUTBUILDING

Garage

OUTSIDE

Driveway

Front and Rear Gardens



Call Loose - 01622 744067 ■ wardsof Kent.co.uk

- Legal advice should be taken to verify fixtures/fittings, planning, alterations and/or lease details
- Through a Homewise Home For Life Plan people aged 60+ can secure this property for up to 59% less, by purchasing a Lifetime Lease.

- Appliances & services are untested, dimensions are approximate and floor plans are not to scale



13014906/20250513/AT/AS