



Price
£365,000

Freehold

3x  2x  1x 

**Melrose Close, Loose,
Maidstone, Kent, ME15**

OVER 60?

Secure this property
for up to **59% less!**

Wards
Helping you move forwards



Main features

- Flexible and spacious accommodation spread over 3 floors
- Private and secure rear garden
- All bedrooms are double in size
- Allocated parking to the front
- Short walk to local shops, sought after Loose Primary School and the picturesque Loose Valley conservation area

Accommodation

GROUND FLOOR

Entrance Hall
 Family Area: 12'0 x 9'0 (3.66m x 2.75m)
 Kitchen/Diner: 13'1 x 8'1 (3.99m x 2.47m)
 Utility Room: 6'0 x 5'0 (1.83m x 1.53m)
 Downstairs Cloakroom : 5'1 x 3'1 (1.55m x 0.94m)

FIRST FLOOR

Landing
 Lounge: 15'0 x 12'1 (4.58m x 3.69m)
 Bedroom 3: 15'0 x 8'1 (4.58m x 2.47m)
 Bathroom: 7'0 x 5'1 (2.14m x 1.55m)

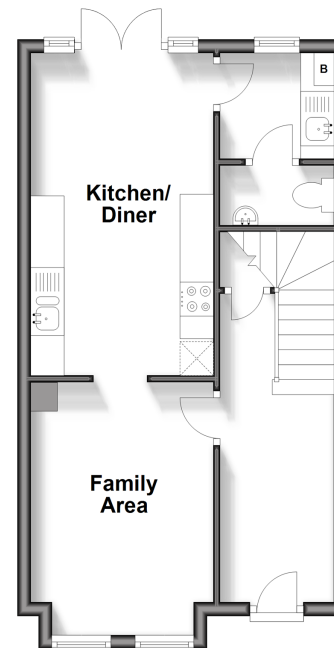
SECOND FLOOR

Bedroom 1: 13'0 x 11'0 (3.97m x 3.36m)
 En Suite Shower Room: 6'1 x 5'1 (1.86m x 1.55m)
 Bedroom 2: 15'0 x 8'1 (4.58m x 2.47m)

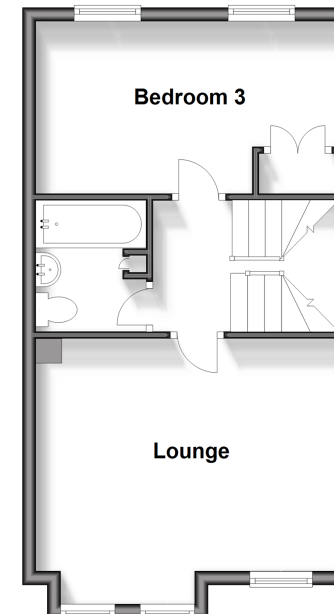
OUTSIDE

Front and Rear Gardens
 Allocated Parking

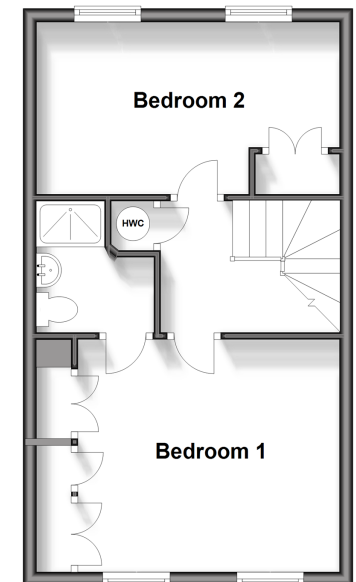
Ground Floor
 Approx. 37.8 sq. metres (406.5 sq. feet)



First Floor
 Approx. 37.7 sq. metres (405.9 sq. feet)



Second Floor
 Approx. 36.7 sq. metres (395.5 sq. feet)



Call Loose - 01622 744067 ■ wardsokent.co.uk

■ Legal advice should be taken to verify fixtures/fittings, planning, alterations and/or lease details
 ■ Through a Homewise Home For Life Plan people aged 60+ can secure this property for up to 59% less, by purchasing a Lifetime Lease.

■ Appliances & services are untested, dimensions are approximate and floor plans are not to scale



13021025/20241017/KIR/AS