



Price
£365,000

Freehold

3x  1x  1x 

**Springett Way,
Coxheath, Maidstone,
Kent, ME17**

OVER 60?

Secure this property
for up to **59% less!**

Wards
Helping you move forwards



Main features

- Thoughtfully extended to the ground floor
- Beautifully landscaped rear garden
- Lots of potential to redecorate and make it your own
- Popular village location
- Short walk to local shops, amenities and sought after Coxheath Primary School

Accommodation

GROUND FLOOR

Entrance Porch
Hallway
Lounge: 11'1 x 11'1 (3.38m x 3.38m)
Dining Area: 12'8 x 8'3 (3.86m x 2.52m)
Family Area: 12'3 x 8'6 (3.74m x 2.59m)
Kitchen: 10'10 x 8'7 (3.30m x 2.62m)

FIRST FLOOR

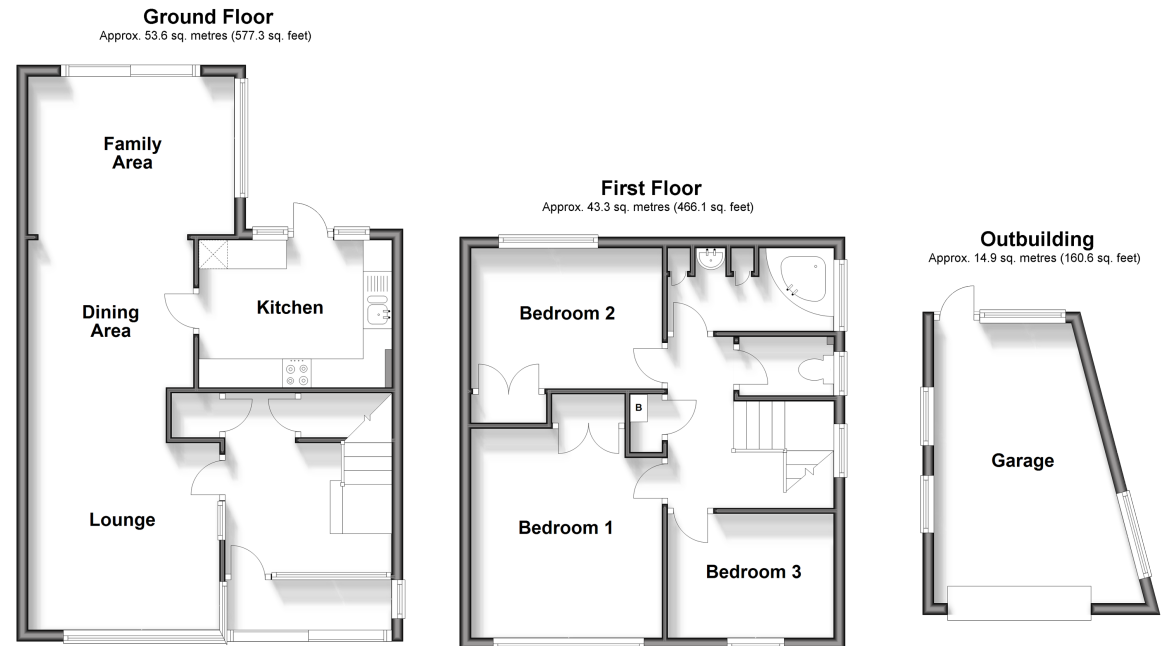
Landing
Bedroom 1: 12'3 x 11'1 (3.74m x 3.38m)
Bedroom 2: 11'2 x 8'4 (3.41m x 2.54m)
Bedroom 3: 9'9 x 7'8 (2.97m x 2.34m)
Bathroom: 9'5 x 4'9 (2.87m x 1.45m)
Separate Toilet: 5'6 x 2'8 (1.68m x 0.81m)

OUTBUILDING

Garage

OUTSIDE

Driveway
Front and Rear Gardens



Call Loose - 01622 744067 ■ wardsofkent.co.uk

■ Legal advice should be taken to verify fixtures/fittings, planning, alterations and/or lease details
■ Through a Homewise Home For Life Plan people aged 60+ can secure this property for up to 59% less, by purchasing a Lifetime Lease.

■ Appliances & services are untested, dimensions are approximate and floor plans are not to scale