



Price

£450,000

Freehold

3x  2x  2x 

**Anglesey Avenue,
Loose, Maidstone, Kent,
ME15**

OVER 60?

Secure this property
for up to **59% less!**

Wards
Helping you move forwards



Ground Floor

Approx. 82.9 sq. metres (892.4 sq. feet)

Main features

- **Spacious and flexible living accommodation**
- **Thoughtfully extended to the ground floor**
- **Well presented throughout**
- **Large corner plot, with further potential to extend, subject to planning and consents**
- **Popular location, short walk to local shops, the Loose Valley conservation area and sought after Loose Primary School**

Accommodation

GROUND FLOOR

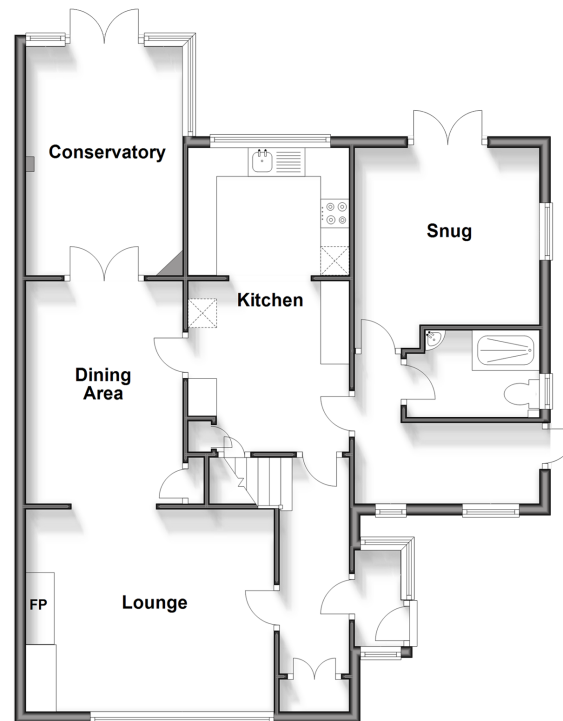
Entrance Porch
Hallway
Lounge: 14'5 x 11'8 (4.40m x 3.56m)
Dining Area: 12'8 x 7'1 (3.86m x 2.16m)
Conservatory: 13'1 x 8'1 (3.99m x 2.47m)
Kitchen: 18'0 x 9'9 (5.49m x 2.97m)
Side Lobby
Snug: 11'5 x 11'1 (3.48m x 3.38m)
Shower Room: 8'0 x 5'1 (2.44m x 1.55m)

FIRST FLOOR

Landing
Bedroom 1: 12'5 x 12'0 (3.79m x 3.66m)
Bedroom 2: 9'7 x 9'4 (2.92m x 2.85m)
Bedroom 3: 8'4 x 7'8 (2.54m x 2.34m)
Bathroom: 8'10 x 5'8 (2.69m x 1.73m)

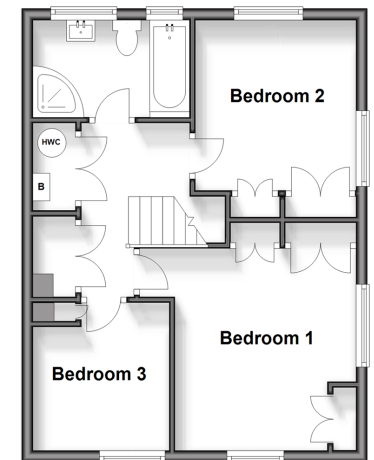
OUTSIDE

Off Road Parking
Front, Side and Rear Gardens



First Floor

Approx. 42.6 sq. metres (458.5 sq. feet)



Call Loose - 01622 744067 ■ wardsof Kent.co.uk

- Legal advice should be taken to verify fixtures/fittings, planning, alterations and/or lease details
- Through a Homewise Home For Life Plan people aged 60+ can secure this property for up to 59% less, by purchasing a Lifetime Lease.

■ Appliances & services are untested, dimensions are approximate and floor plans are not to scale



13158493/20241007/KIR/AS