



OVER 60?

Secure this property
for up to **59% less!**

Price
£300,000

Freehold

3x  1x  1x 

**Well Street, Loose,
Maidstone, Kent, ME15**

Wards
Helping you move forwards



Main features

- Lots of potential to redecorate and put your own stamp on
- Private and secluded rear garden
- Picturesque semi rural village location within the Loose Valley conservation area
- Walking distance to the village pub, sought after primary school and Post Office/shop
- NO FORWARD CHAIN

Accommodation

GROUND FLOOR

Entrance Hall
 Lounge: 13'0 x 12'0 (3.97m x 3.66m)
 Dining Area: 10'1 x 9'1 (3.08m x 2.77m)
 Kitchen: 9'1 x 9'0 (2.77m x 2.75m)

FIRST FLOOR

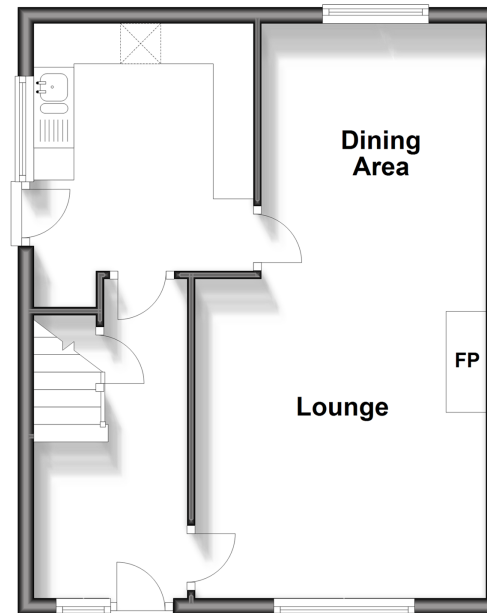
Landing
 Bedroom 1: 12'0 x 9'1 (3.66m x 2.77m)
 Bedroom 2: 10'1 x 9'1 (3.08m x 2.77m)
 Bedroom 3: 8'1 x 7'0 (2.47m x 2.14m)
 Shower Room: 8'1 x 6'0 (2.47m x 1.83m)

OUTSIDE

Front and Rear Gardens
 Off Road Parking
 Shed

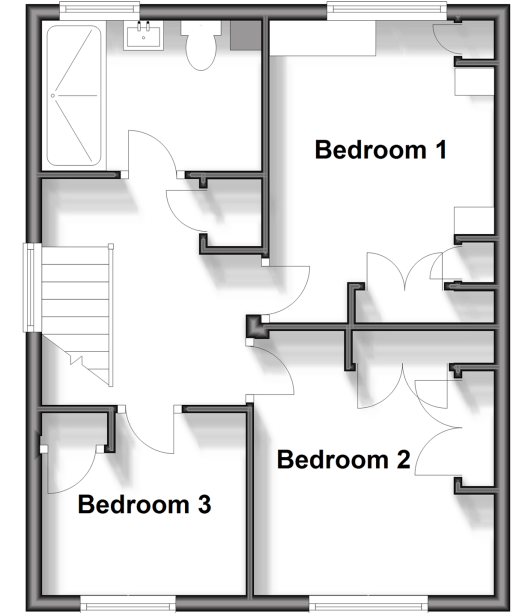
Ground Floor

Approx. 40.1 sq. metres (431.6 sq. feet)



First Floor

Approx. 40.1 sq. metres (431.6 sq. feet)



Call Loose - 01622 744067 ■ wardsofKent.co.uk

■ Legal advice should be taken to verify fixtures/fittings, planning, alterations and/or lease details
 ■ Through a Homewise Home For Life Plan people aged 60+ can secure this property for up to 59% less, by purchasing a Lifetime Lease.

■ Appliances & services are untested, dimensions are approximate and floor plans are not to scale



13022061/20241030/AY/AS