

**OVER 60?**

Secure this property  
for up to **59% less!**



**Price**

**£230,000**

**Leasehold**

2x  1x  1x 

Capell Close, Coxheath, Maidstone, Kent,

ME17

*Wards*

Helping you move forwards





## Main features

- **2 bedroom ground floor maisonette tucked away in a cul de sac**
- **Generous size, private rear garden, perfect for the summer months**
- **Well presented throughout**
- **Modern kitchen with a useful utility room**
- **Popular village location, short walk to local shops & amenities**

## Accommodation

### GROUND FLOOR

#### Entrance Hall

Lounge: 13'7 x 10'4 (4.14m x 3.15m)

Kitchen: 10'6 x 8'9 (3.20m x 2.67m)

Utility Room: 4'9 x 2'10 (1.45m x 0.86m)

Bedroom 1: 11'9 x 10'3 (3.58m x 3.13m)

Bedroom 2: 12'0 x 9'5 (3.66m x 2.87m)

Bathroom: 7'0 x 5'6 (2.14m x 1.68m)

### OUTSIDE

Off Road Parking

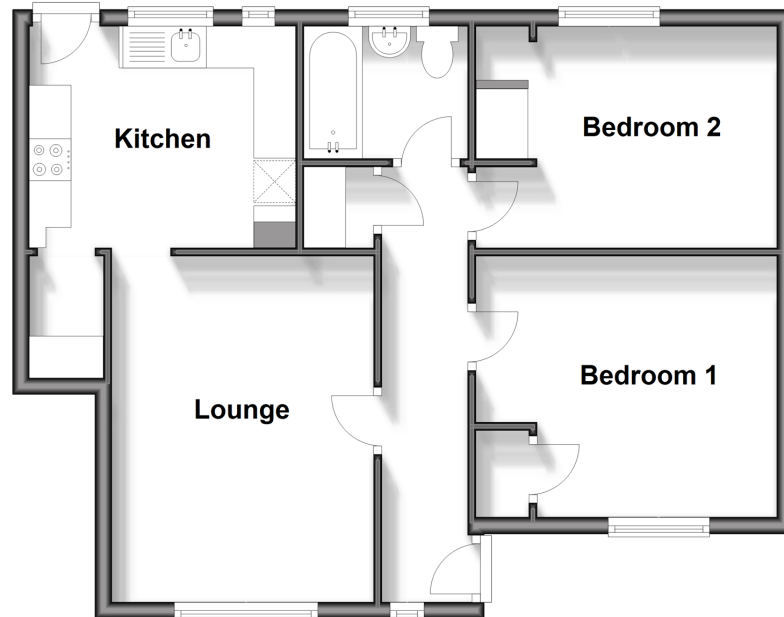
Rear Garden

Outbuilding Store Room

Shed

## Ground Floor

Approx. 55.2 sq. metres (594.5 sq. feet)



**Call Loose - 01622 744067 ■ [wardsof Kent.co.uk](http://wardsof Kent.co.uk)**

- Legal advice should be taken to verify fixtures/fittings, planning, alterations and/or lease details
- Through a Homewise Home For Life Plan people aged 60+ can secure this property for up to 59% less, by purchasing a Lifetime Lease.

- Appliances & services are untested, dimensions are approximate and floor plans are not to scale



13022054/20240928/KIR/AS