



Price
£350,000

Freehold

3x  1x  1x 

**Pippin Close, Coxheath,
Maidstone, Kent, ME17**

OVER 60?

Secure this property
for up to **59% less!**

Wards
Helping you move forwards



Main features

- Well presented home with generous sized rooms
- Recently refitted shower room
- Private and secure rear garden backing onto woodland
- Ready to move into yet still offering potential to extend, subject to planning & consents
- Tucked away in a quiet cul-de-sac in popular Coxheath with close proximity of amenities and schools

Accommodation

GROUND FLOOR

Entrance Hall
 Lounge: 14'1 x 13'0 (4.30m x 3.97m)
 Dining Area: 9'0 x 7'1 (2.75m x 2.16m)
 Kitchen: 9'0 x 8'0 (2.75m x 2.44m)
 Conservatory: 15'0 x 7'1 (4.58m x 2.16m)

FIRST FLOOR

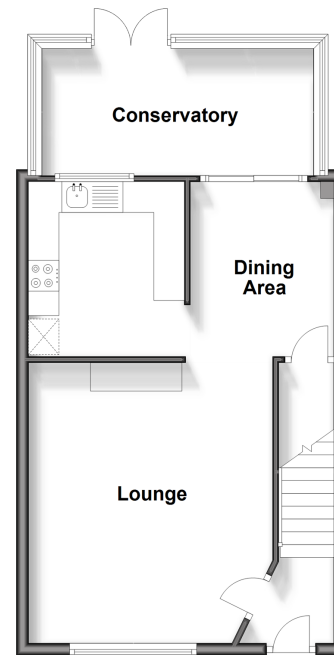
Landing
 Bedroom 1: 12'0 x 9'0 (3.66m x 2.75m)
 Bedroom 2: 11'1 x 9'0 (3.38m x 2.75m)
 Bedroom 3: 9'0 x 6'0 (2.75m x 1.83m)
 Shower Room: 6'0 x 6'0 (1.83m x 1.83m)

OUTSIDE

Car Port and Off Road Parking
 Rear Garden
 Shed

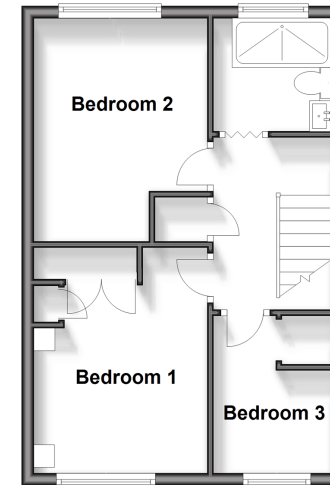
Ground Floor

Approx. 47.1 sq. metres (507.2 sq. feet)



First Floor

Approx. 36.1 sq. metres (388.3 sq. feet)



Call Loose - 01622 744067 ■ wardsof Kent.co.uk

- Legal advice should be taken to verify fixtures/fittings, planning, alterations and/or lease details
- Through a Homewise Home For Life Plan people aged 60+ can secure this property for up to 59% less, by purchasing a Lifetime Lease.

- Appliances & services are untested, dimensions are approximate and floor plans are not to scale



13016702/20241003/KIR/VMK