



Price
£365,000

Freehold

3x  1x  1x 

**Cricketers Way,
Coxheath, Maidstone,
Kent, ME17**

OVER 60?

Secure this property
for up to **59% less!**

Wards
Helping you move forwards



Main features

- Beautifully presented family house
- Remainder of NHBC warranty
- Off road parking for 2 cars
- Situated on a modern development in a popular village location
- Short walk to local shops, amenities and sought after Coxheath Primary School

Accommodation

GROUND FLOOR

Entrance Hall
Downstairs Cloakroom: 8'8 x 6'2 (2.64m x 1.88m)
Kitchen: 9'8 x 9'3 (2.95m x 2.82m)
Lounge: 16'2 x 14'8 (4.93m x 4.47m)

FIRST FLOOR

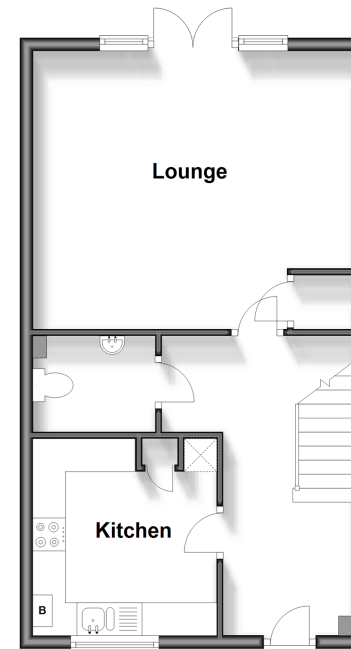
Landing
Bedroom 1: 15'5 x 8'10 (4.70m x 2.69m)
Bedroom 2: 13'4 x 8'10 (4.07m x 2.69m)
Bedroom 3: 11'0 x 6'9 (3.36m x 2.06m)
Bathroom: 6'9 x 6'5 (2.06m x 1.96m)

OUTSIDE

Front and Rear Gardens
Off Road Parking

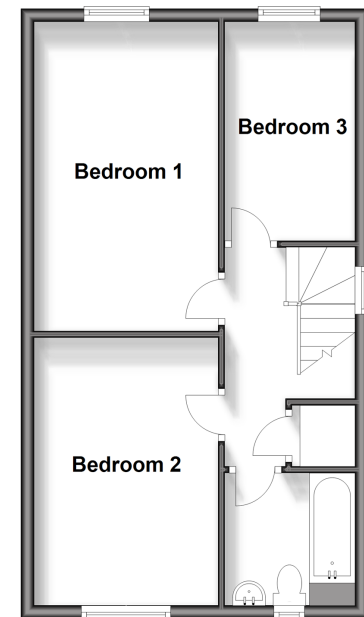
Ground Floor

Approx. 43.7 sq. metres (470.4 sq. feet)



First Floor

Approx. 43.7 sq. metres (470.4 sq. feet)



Call Loose - 01622 744067 ■ wardsofkent.co.uk

- The seller is a person connected with Wards as defined in the Estate Agents Act 1979
- Appliances & services are untested, dimensions are approximate and floor plans are not to scale

- Legal advice should be taken to verify fixtures/fittings, planning, alterations and/or lease details
- Through a Homewise Home For Life Plan people aged 60+ can secure this property for up to 59% less, by purchasing a Lifetime Lease.



13021968/20250528/AS/AS