



Guide Price
£425,000

Freehold

4x  2x  2x 

**Broadoak Avenue,
Maidstone, Kent, ME15**

OVER 60?

Secure this property
for up to **59% less!**

Wards
Helping you move forwards



Main features

- Ready to move into, yet still lots of potential to make it your own
- Thoughtfully extended with an abundance of space throughout
- Private and secure rear garden
- Popular and convenient location, walking distance to sought after primary schools, local shops and the picturesque Loose Valley conservation area
- NO FORWARD CHAIN

Accommodation

GROUND FLOOR

Entrance Porch
 Downstairs Cloakroom: 5'0 x 4'1 (1.53m x 1.25m)
 Lounge: 14'1 x 11'1 (4.30m x 3.38m)
 Dining Room: 17'1 x 11'1 (5.21m x 3.38m)
 Kitchen: 10'0 x 9'1 (3.05m x 2.77m)
 Hallway

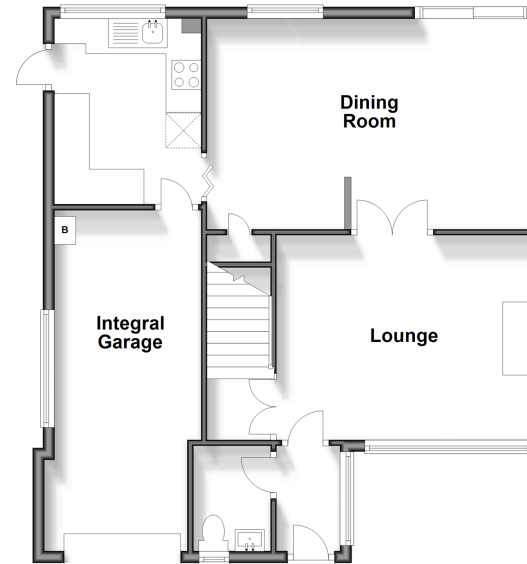
FIRST FLOOR

Landing
 Bedroom 1: 17'1 x 9'1 (5.21m x 2.77m)
 En Suite Shower Room: 8'1 x 5'1 (2.47m x 1.55m)
 Bedroom 2: 10'0 x 10'0 (3.05m x 3.05m)
 Bedroom 3: 13'1 x 10'0 (3.99m x 3.05m)
 Bedroom 4: 9'1 x 7'0 (2.77m x 2.14m)
 Bathroom: 7'0 x 6'0 (2.14m x 1.83m)

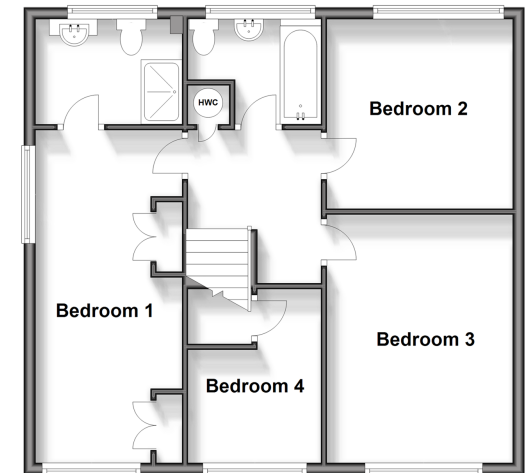
OUTSIDE

Integral Garage and Driveway
 Rear Garden

Ground Floor
 Approx. 67.7 sq. metres (729.1 sq. feet)



First Floor
 Approx. 60.6 sq. metres (651.9 sq. feet)



Call Loose - 01622 744067 ■ wardsokent.co.uk

■ Legal advice should be taken to verify fixtures/fittings, planning, alterations and/or lease details
 ■ Through a Homewise Home For Life Plan people aged 60+ can secure this property for up to 59% less, by purchasing a Lifetime Lease.

■ Appliances & services are untested, dimensions are approximate and floor plans are not to scale



13021896/20240924/AS/VMK