



Price
£400,000

Freehold

3x  1x  1x 

**Buxton Close,
Maidstone, Kent, ME15**

OVER 60?

Secure this property
for up to **59% less!**

Wards
Helping you move forwards



Main features

- **Bright and airy open plan kitchen and garden room, ideal for entertaining**
- **Generous room sizes throughout**
- **Mature, fully secluded and private rear garden offering a peaceful haven to relax in, perfect for keen gardeners**
- **Tucked away in a quite cul de sac in popular Loose, short walk to local shops and amenities**
- **NO FORWARD CHAIN**

Accommodation

GROUND FLOOR

Entrance Hall

Lounge: 17'1 x 10'1 (5.21m x 3.08m)

Kitchen: 11'1 x 7'1 (3.38m x 2.16m)

Garden Room: 10'0 x 9'1 (3.05m x 2.77m)

Bedroom 1: 12'1 x 10'0 (3.69m x 3.05m)

Bedroom 2: 12'0 x 8'0 (3.66m x 2.44m)

Bedroom 3/Dining Room: 10'1 x 9'1 (3.08m x 2.77m)

Shower Room: 6'0 x 5'1 (1.83m x 1.55m)

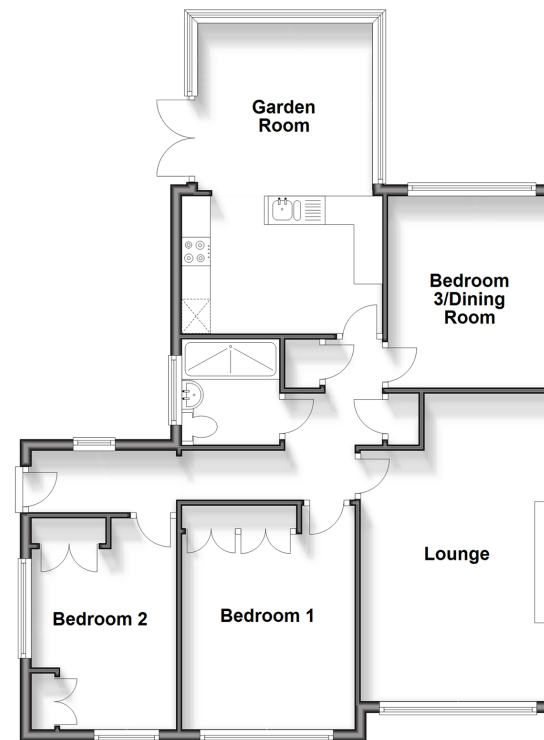
OUTSIDE

Car Port and Driveway

Front and Rear Gardens

Ground Floor

Approx. 81.0 sq. metres (872.2 sq. feet)



Call Loose - 01622 744067 ■ wardsofKent.co.uk

■ Legal advice should be taken to verify fixtures/fittings, planning, alterations and/or lease details
 ■ Through a Homewise Home For Life Plan people aged 60+ can secure this property for up to 59% less, by purchasing a Lifetime Lease.

■ Appliances & services are untested, dimensions are approximate and floor plans are not to scale



13021793/20240612/AY/VMK