

**OVER 60?**

Secure this property  
for up to **59% less!**



**Price**

**£575,000**

**Freehold**

4x  2x  2x 

Eddington Close, Maidstone, Kent, ME15

*Wards*

Helping you move forwards





## Main features

- Thoughtfully extended, incredible size family home
- Generous study, ideal for those who work from home
- Beautiful, large garden overlooking orchards
- Tucked away in a quite cul de sac in popular Loose, short walk to local shops, sought after primary schools and the picturesque conservation area
- NO FORWARD CHAIN

## Accommodation

### GROUND FLOOR

Entrance Hall  
 Downstairs Cloakroom: 6'1 x 5'1 (1.86m x 1.55m)  
 Study: 14'0 x 12'1 (4.27m x 3.69m)  
 Lounge: 17'1 x 11'1 (5.21m x 3.38m)  
 Dining Area: 20'1 x 11'1 (6.13m x 3.38m)  
 Kitchen: 15'1 x 8'1 (4.60m x 2.47m)  
 Utility Room: 14'0 x 4'1 (4.27m x 1.25m)

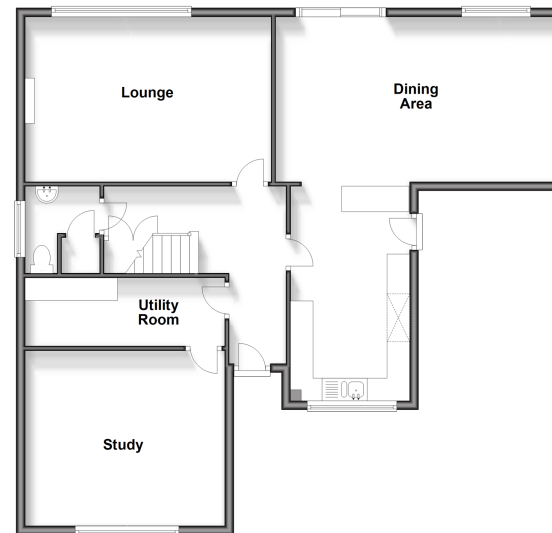
### FIRST FLOOR

Landing  
 Bedroom 1: 13'1 x 12'0 (3.99m x 3.66m)  
 Dressing Room: 9'1 x 6'1 (2.77m x 1.86m)  
 En Suite Shower Room: 9'1 x 4'1 (2.77m x 1.25m)  
 Bedroom 2: 13'1 x 10'1 (3.99m x 3.08m)  
 Bedroom 3: 11'1 x 11'1 (3.38m x 3.38m)  
 Bedroom 4: 9'0 x 8'1 (2.75m x 2.47m)  
 Bathroom: 8'1 x 7'1 (2.47m x 2.16m)

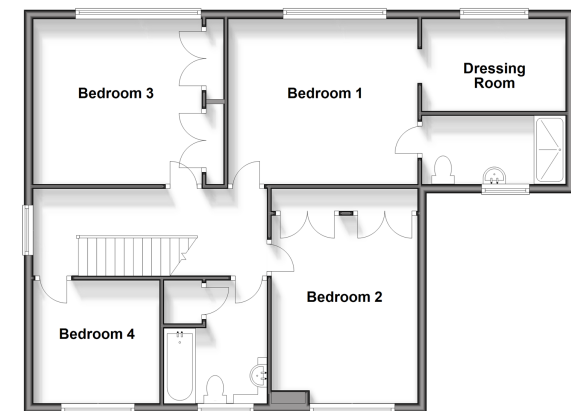
### OUTSIDE

Off Road Parking  
 Rear Garden  
 Shed/Workshop  
 Shed

**Ground Floor**  
 Approx. 95.4 sq. metres (1026.9 sq. feet)



**First Floor**  
 Approx. 84.1 sq. metres (905.5 sq. feet)



Call Loose - 01622 744067 ■ [wardsokent.co.uk](http://wardsokent.co.uk)

- The seller is a person connected with Wards as defined in the Estate Agents Act 1979
- Appliances & services are untested, dimensions are approximate and floor plans are not to scale

- Legal advice should be taken to verify fixtures/fittings, planning, alterations and/or lease details
- Through a Homewise Home For Life Plan people aged 60+ can secure this property for up to 59% less, by purchasing a Lifetime Lease.



13021973/20240530/KIR/VMK