



**Price**  
**£400,000**

**Freehold**

3x  1x  2x 

**Norrington Road, Loose,  
Maidstone, Kent, ME15**

**OVER 60?**

Secure this property  
for up to **59% less!**

*Wards*  
Helping you move forwards



## Main features

- Generous size family home on a popular road
- Bright and airy lounge with feature bay window
- Large, private rear garden with 2 useful summer houses
- Versatile layout, offering lots of extension potential subject to planning and consents
- Short walk to sought after Loose Primary School and the quaint, picturesque village with conservation area

## Accommodation

### GROUND FLOOR

Entrance Hall  
 Lounge: 15'0 x 10'1 (4.58m x 3.08m)  
 Kitchen: 10'1 x 6'0 (3.08m x 1.83m)  
 Dining Room: 12'0 x 11'1 (3.66m x 3.38m)  
 Conservatory: 9'0 x 8'0 (2.75m x 2.44m)  
 Bedroom 3: 8'0 x 7'0 (2.44m x 2.14m)

### FIRST FLOOR

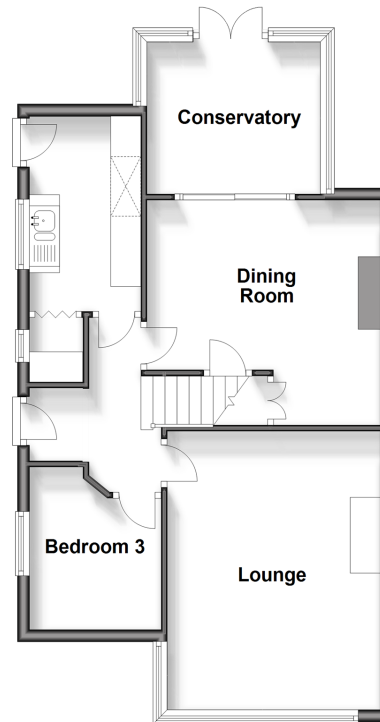
Landing  
 Bedroom 1: 15'0 x 11'1 (4.58m x 3.38m)  
 Bedroom 2: 11'1 x 9'0 (3.38m x 2.75m)  
 Bathroom: 5'1 x 5'1 (1.55m x 1.55m)  
 Eaves

### OUTSIDE

Garage and Driveway  
 Rear Garden  
 2 Summer Houses

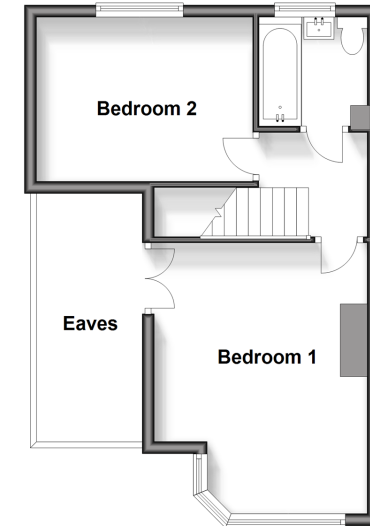
### Ground Floor

Approx. 55.2 sq. metres (594.2 sq. feet)



### First Floor

Approx. 33.2 sq. metres (357.3 sq. feet)



Call Loose - 01622 744067 ■ [wardsofkent.co.uk](http://wardsofkent.co.uk)

- Legal advice should be taken to verify fixtures/fittings, planning, alterations and/or lease details
- Through a Homewise Home For Life Plan people aged 60+ can secure this property for up to 59% less, by purchasing a Lifetime Lease.

- Appliances & services are untested, dimensions are approximate and floor plans are not to scale



13021987/20240522/VMK/VMK