



**Price**  
**£450,000**

**Freehold**

4x  1x  1x 

**Lewis Court Drive,  
Boughton Monchelsea,  
Maidstone, Kent, ME17**

**OVER 60?**

Secure this property  
for up to **59% less!**

*Wards*  
Helping you move forwards





## Main features

- **Fantastic size family home with a good size rear garden**
- **Bright and airy lounge, beautifully finished**
- **Open plan kitchen and dining area, sure to become the hub of the home**
- **Thoughtfully extended benefiting from generous room sizes throughout**
- **Popular village location, walking distance to Post Office/shop, primary school, local pub and picturesque countryside**

## Accommodation

### GROUND FLOOR

Entrance Hall

Lounge: 25'0 x 12'0 (7.63m x 3.66m)

Dining Area: 15'1 x 12'1 (4.60m x 3.69m)

Kitchen: 19'1 x 8'1 (5.82m x 2.47m)

### FIRST FLOOR

Landing

Bedroom 1: 19'1 x 12'0 (5.82m x 3.66m)

Bedroom 2: 13'0 x 9'0 (3.97m x 2.75m)

Bedroom 3: 11'1 x 9'0 (3.38m x 2.75m)

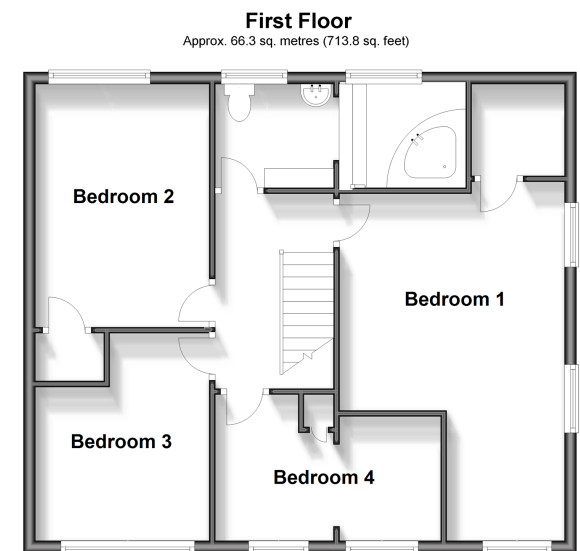
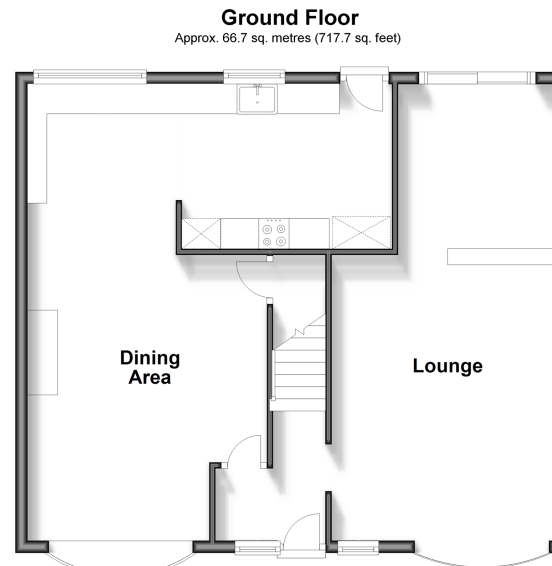
Bedroom 4: 13'0 x 8'0 (3.97m x 2.44m)

Bathroom: 14'0 x 5'1 (4.27m x 1.55m)

### OUTSIDE

Off Road Parking

Rear Garden



**Call Loose - 01622 744067 ■ [wardsofkent.co.uk](http://wardsofkent.co.uk)**

- Legal advice should be taken to verify fixtures/fittings, planning, alterations and/or lease details
- Through a Homewise Home For Life Plan people aged 60+ can secure this property for up to 59% less, by purchasing a Lifetime Lease.

- Appliances & services are untested, dimensions are approximate and floor plans are not to scale



13020880/20240515/KIR/VMK