



Price

£200,000

Leasehold

2x  2x  1x 

**The Farrows, Maidstone,
Kent, ME15**

OVER 60?

Secure this property
for up to **59% less!**

Wards
Helping you move forwards



Main features

- Bright and spacious first floor apartment in a popular location
- Short walk to local shops, bus stop, doctors and amenities
- Allocated parking and bike storage
- Ideal first time buy, as a buy to let investment, or to downsize to
- Close to picturesque country walks

Accommodation

FIRST FLOOR

Entrance Hall

Lounge: 20'1 x 9'11 (6.13m x 3.02m)

Kitchen/Diner: 11'11 x 10'1 (3.63m x 3.08m)

Balcony

Bedroom 1: 11'6 x 10'10 (3.51m x 3.30m)

En Suite Shower Room: 7'3 x 4'4 (2.21m x 1.32m)

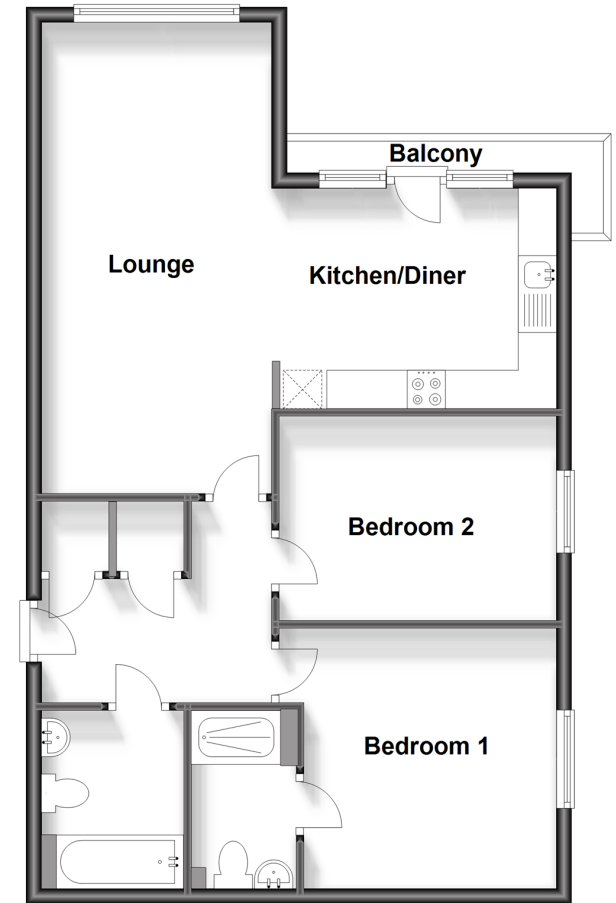
Bedroom 2: 11'11 x 8'8 (3.63m x 2.64m)

Bathroom: 7'4 x 6'3 (2.24m x 1.91m)

OUTSIDE

Allocated Parking

First Floor
Approx. 67.9 sq. metres (731.3 sq. feet)



Call Loose - 01622 744067 ■ wardsof Kent.co.uk

- Legal advice should be taken to verify fixtures/fittings, planning, alterations and/or lease details
- Appliances & services are untested, dimensions are approximate and floor plans are not to scale
- Through a Homewise Home For Life Plan people aged 60+ can secure this property for up to 59% less, by purchasing a Lifetime Lease.



13020087/20240509/KIR/VMK