



Price
£350,000

Freehold

3x  1x  2x 

**Spring Cottages,
Bottlescrew Hill,
Boughton Monchelsea,
Maidstone, Kent, ME17**

OVER 60?

Secure this property
for up to **59% less!**

Wards
Helping you move forwards



Main features

- Beautiful cottage in a tranquil conservation area
- 2 allocated parking spaces
- Separate kitchen and dining room, that could easily become one room, subject to building regulations
- Well presented, private and secure rear garden with patio to the side for alfresco dining
- Take a stroll through the picturesque countryside on your doorstep, yet with easy access to local amenities nearby

Accommodation

GROUND FLOOR

Entrance Hall
 Lounge: 13'0 x 12'1 (3.97m x 3.69m)
 Dining Room: 11'1 x 8'1 (3.38m x 2.47m)
 Kitchen: 10'1 x 6'1 (3.08m x 1.86m)
 Conservatory: 15'0 x 7'1 (4.58m x 2.16m)

FIRST FLOOR

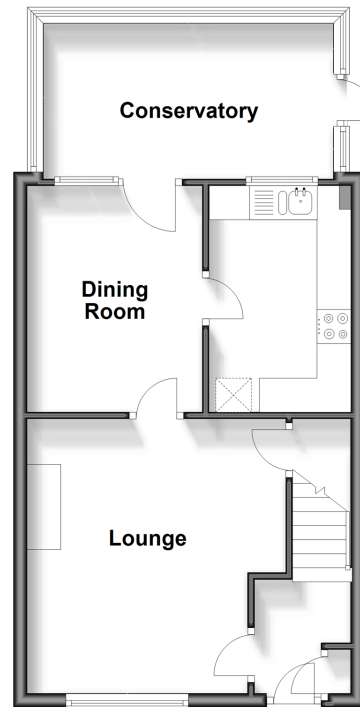
Landing
 Bedroom 1: 13'0 x 9'0 (3.97m x 2.75m)
 Bedroom 2: 11'0 x 8'1 (3.36m x 2.47m)
 Bedroom 3: 8'1 x 6'0 (2.47m x 1.83m)
 Bathroom: 6'1 x 6'0 (1.86m x 1.83m)

OUTSIDE

Front and Rear Gardens
 2 Allocated Parking Spaces
 Shed

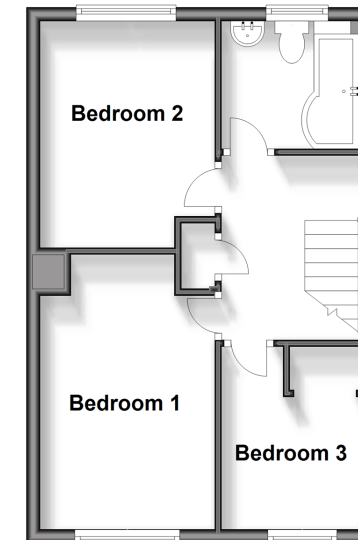
Ground Floor

Approx. 45.8 sq. metres (492.6 sq. feet)



First Floor

Approx. 35.9 sq. metres (386.2 sq. feet)



Call Loose - 01622 744067 ■ wardsokent.co.uk

- Legal advice should be taken to verify fixtures/fittings, planning, alterations and/or lease details
- Through a Homewise Home For Life Plan people aged 60+ can secure this property for up to 59% less, by purchasing a Lifetime Lease.

- Appliances & services are untested, dimensions are approximate and floor plans are not to scale



13021975/20240508/KIR/VMK