

OVER 60?

Secure this property
for up to **59% less!**



Guide Price

£630,000

Freehold

4x  2x  2x 

Old Loose Hill, Loose, Maidstone, Kent,

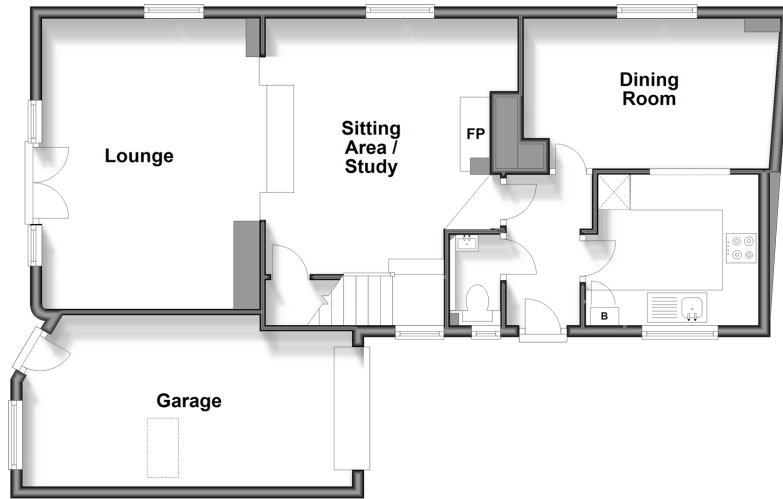
ME15

Wards

Helping you move forwards

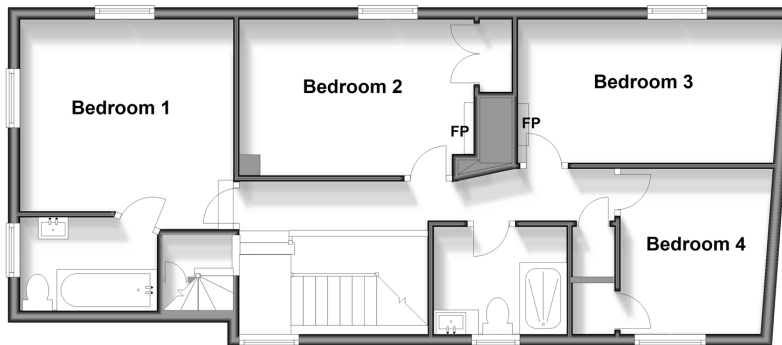
Split Level Ground Floor

Approx. 77.8 sq. metres (837.0 sq. feet)



Split Level First Floor

Approx. 65.8 sq. metres (708.7 sq. feet)



Second Floor

Approx. 15.7 sq. metres (168.8 sq. feet)



Accommodation

SPLIT LEVEL GROUND FLOOR

Entrance Hall

Downstairs Cloakroom: 5'2 x 2'8 (1.58m x 0.81m)

Kitchen: 8'10 x 8'4 (2.69m x 2.54m)

Dining Room: 14'6 x 8'3 (4.42m x 2.52m)

Sitting Area/Study: 16'2 x 11'5 (4.93m x 3.48m)

Lounge: 17'4 x 14'3 (5.29m x 4.35m)

SPLIT LEVEL FIRST FLOOR

Landing

Bedroom 1: 11'9 x 11'8 (3.58m x 3.56m)

En Suite Bathroom: 7'4 x 5'4 (2.24m x 1.63m)

Bedroom 2: 12'8 x 9'0 (3.86m x 2.75m)

Bedroom 3: 13'7 x 8'3 (4.14m x 2.52m)

Bedroom 4: 9'1 x 7'1 (2.77m x 2.16m)

Shower Room: 5'6 x 5'1 (1.68m x 1.55m)

SECOND FLOOR

Loft Room: 16'6 x 9'6 (5.03m x 2.90m)

OUTSIDE

Garage and Driveway

Side and Rear Gardens

Summer House



Main features

- Beautiful period home with a wealth of charm and character features throughout
- Useful loft room, ideal for a study, or a snug
- Mature & private rear garden with summer house
- Spacious split level, open plan lounge and sitting area/study, complete with log burner
- Popular Loose village conservation area location, with scenic countryside views & country pub



Nearest Schools

Primary Schools: Loose Primary 0.2 miles, Tiger Primary 1.3 miles
Secondary Schools: Cornwallis Academy 1.0 miles, Maidstone Grammar School 2.5 miles, Maidstone Grammar School for Girls 2.6 miles



Transport Information

Train Stations: Maidstone West 2.8 miles, Maidstone Barracks 3.1 miles, East Farleigh 3.2 miles, Maidstone East 3.2 miles, Staplehurst 6.2 miles



Address

Old Loose Hill, Loose, Maidstone, Kent, ME15



Directions

For directions to this property please contact us.



Wards
Helping you move forwards

Call Loose Branch 01622 744067 ■ wardsofkent.co.uk



- Legal advice should be taken to verify fixtures/fittings, planning, alterations and/or lease details
- Appliances & services are untested, dimensions are approximate and floor plans are not to scale
- Through a Homewise Home For Life Plan people aged 60+ can secure this property for up to 59% less, by purchasing a Lifetime Lease.



EPC RATING
CURRENT: **D(56)** POTENTIAL: **B(31)**

13021123/20240812/AY/VMK