



Price
£525,000

Freehold

4x  2x  3x 

**Leigh Avenue, Loose,
Maidstone, Kent, ME15**

OVER 60?

Secure this property
for up to **59% less!**

Wards
Helping you move forwards



Main features

- Generous room sizes throughout
- Useful and spacious study, ideal for those who work from home
- Mature and private rear garden
- Ready to move into yet still offering extension potential, subject to planning and consents
- Located in a popular and quiet cul de sac, short walk to popular primary schools, local shops and the picturesque Loose Valley conservation area

Accommodation

GROUND FLOOR

Entrance Porch
Hallway
Dining Room: 16'0 x 11'1 (4.88m x 3.38m)
Study: 19'1 x 10'1 (5.82m x 3.08m)
Snug: 12'0 x 8'1 (3.66m x 2.47m)
Lounge: 24'0 x 14'0 (7.32m x 4.27m)
Kitchen/Breakfast Room: 14'1 x 9'0 (4.30m x 2.75m)
Shower Room: 6'1 x 5'1 (1.86m x 1.55m)

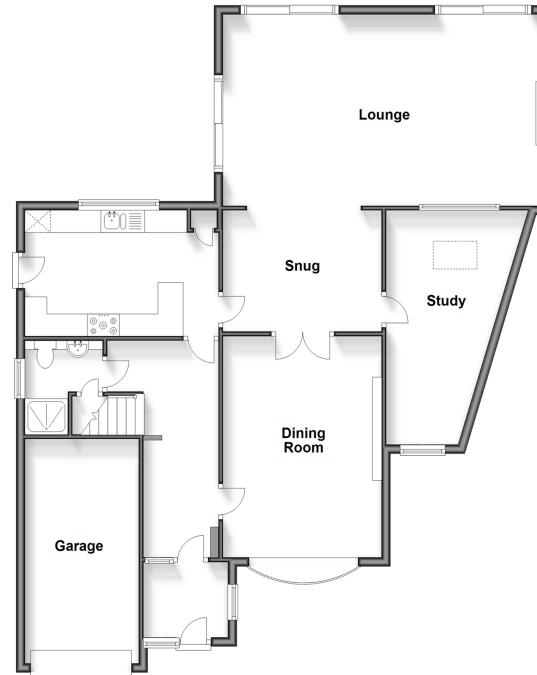
FIRST FLOOR

Landing
Bedroom 1: 12'1 x 12'0 (3.69m x 3.66m)
Bedroom 2: 12'0 x 11'1 (3.66m x 3.38m)
Bedroom 3: 12'0 x 8'1 (3.66m x 2.47m)
Bedroom 4: 9'1 x 7'1 (2.77m x 2.16m)
Bathroom: 9'1 x 6'0 (2.77m x 1.83m)

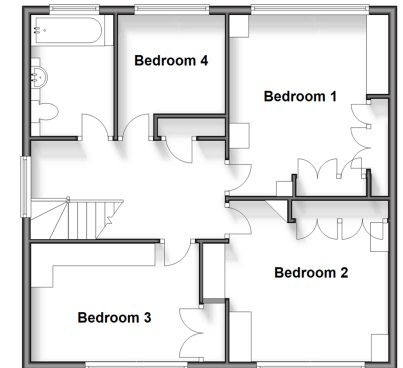
OUTSIDE

Garage and Driveway
Rear Garden
Greenhouse
Shed

Ground Floor
Approx. 119.7 sq. metres (1288.1 sq. feet)



First Floor
Approx. 63.7 sq. metres (685.5 sq. feet)



Call Loose - 01622 744067 ■ wardsokent.co.uk

- Legal advice should be taken to verify fixtures/fittings, planning, alterations and/or lease details
- Through a Homewise Home For Life Plan people aged 60+ can secure this property for up to 59% less, by purchasing a Lifetime Lease.

- Appliances & services are untested, dimensions are approximate and floor plans are not to scale



13021928/20240327/KIR/VMK