

OVER 60?

Secure this property
for up to **59% less!**



Price

£680,000

Freehold

4x  2x  2x 

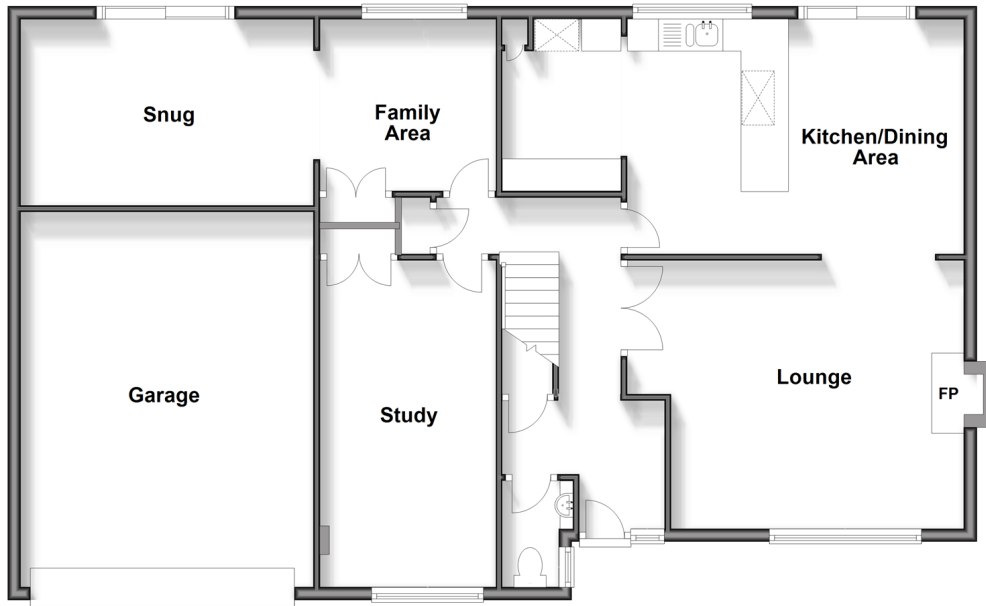
Copper Tree Court, Loose, Maidstone,
Kent, ME15

Wards

Helping you move forwards

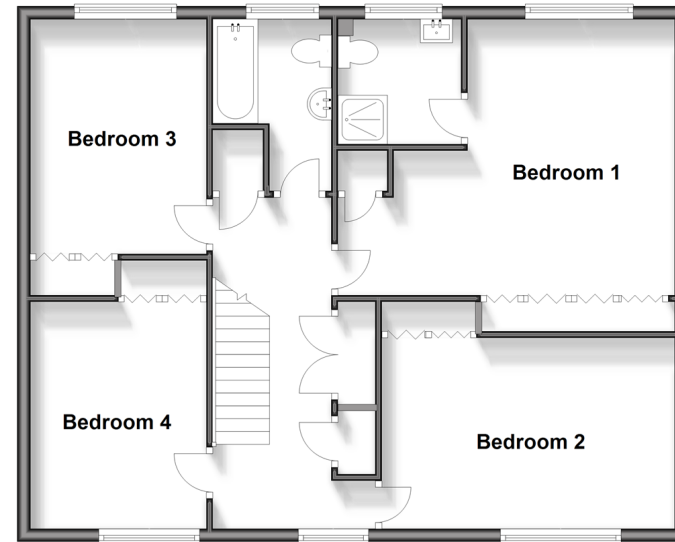
Ground Floor

Approx. 122.8 sq. metres (1321.5 sq. feet)



First Floor

Approx. 79.6 sq. metres (857.2 sq. feet)



Accommodation

GROUND FLOOR

- Entrance Hall
- Downstairs Cloakroom
- Lounge: 16'1 x 13'1 (4.91m x 3.99m)
- Kitchen/Dining Area: 17'0 x 11'1 (5.19m x 3.38m)
- Kitchen Area: 8'1 x 6'0 (2.47m x 1.83m)
- Study: 16'1 x 8'1 (4.91m x 2.47m)
- Family Area: 8'1 x 8'1 (2.47m x 2.47m)
- Snug: 14'0 x 9'1 (4.27m x 2.77m)

FIRST FLOOR

- Landing
- Bedroom 1: 17'0 x 13'1 (5.19m x 3.99m)
- En Suite Shower Room: 6'1 x 5'1 (1.86m x 1.55m)
- Bedroom 2: 14'1 x 10'0 (4.30m x 3.05m)
- Bedroom 3: 11'1 x 9'0 (3.38m x 2.75m)
- Bedroom 4: 11'0 x 9'0 (3.36m x 2.75m)
- Bathroom: 8'1 x 6'0 (2.47m x 1.83m)

OUTSIDE

- Double Garage and Driveway
- Front and Rear Gardens



Main features

- Thoughtfully extended, historically lapsed planning permission for further extension
- Great size study, ideal for home working
- Large, private garden backing onto the picturesque conservation area
- Spacious and sociable open plan kitchen/dining area, sure to become the hub of the home
- Located in a quiet cul de sac, short walk to Loose Primary School and local shops

Nearest Schools

Primary Schools: Loose Primary 0.2 miles, Tiger Primary 1.2 miles
Secondary Schools: Cornwallis Academy 1.6 miles, Maidstone Grammar School 2.4 miles, Maidstone Grammar School for Girls 2.6 miles

Transport Information

Train Stations: Maidstone West 2.7 miles, Maidstone Barracks 3.1 miles, Maidstone East 3.2 miles, Marden 5.9 miles

Address

Copper Tree Court, Loose, Maidstone, Kent, ME15

Directions

For directions to this property please contact us.



Wards
Helping you move forwards

Call Loose Branch 01622 744067 ■ wardsofkent.co.uk



■ Legal advice should be taken to verify fixtures/fittings, planning, alterations and/or lease details ■ Appliances & services are untested, dimensions are approximate and floor plans are not to scale
■ Through a Homewise Home For Life Plan people aged 60+ can secure this property for up to 59% less, by purchasing a Lifetime Lease.

EPC RATING Lightbulb icon 100% icon	CURRENT:	POTENTIAL:
	D(68)	B(31)

13020915/20240309/KIR/VMK