

OVER 60?

Secure this property
for up to **59% less!**



Price

£875,000

Freehold

4x  3x  3x 

Pickering Street, Loose, Maidstone, Kent,

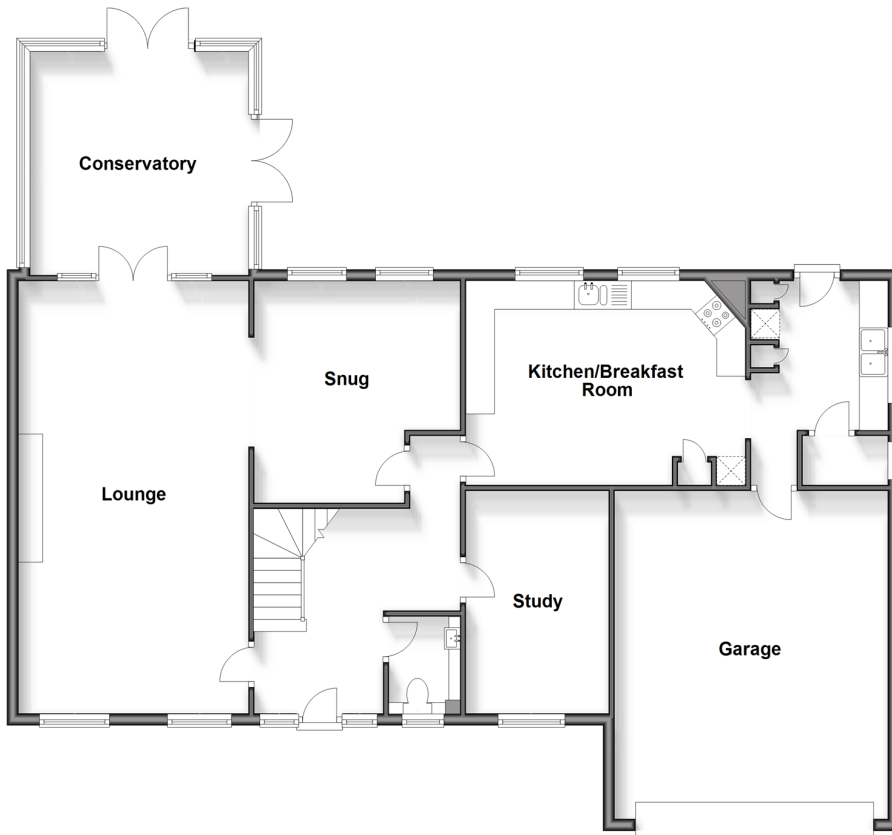
ME15

Wards

Helping you move forwards

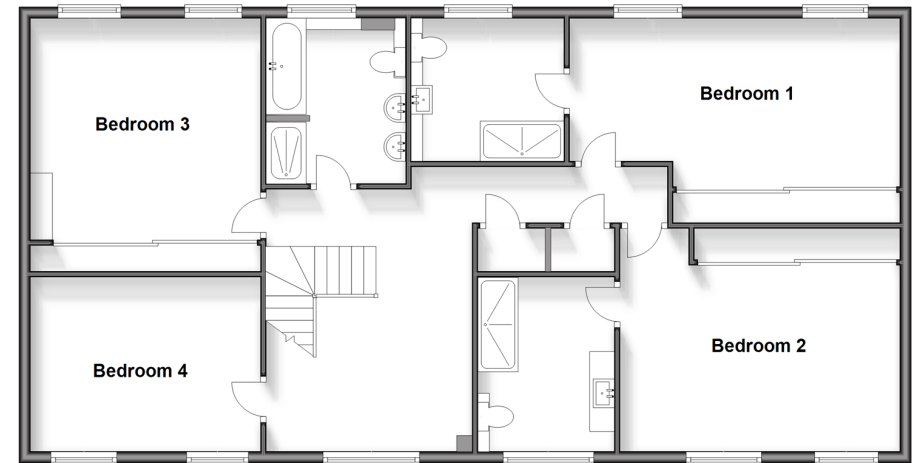
Ground Floor

Approx. 138.6 sq. metres (1492.1 sq. feet)



First Floor

Approx. 115.0 sq. metres (1237.6 sq. feet)



Accommodation

GROUND FLOOR

Entrance Hall
Downstairs Cloakroom: 5'1 x 3'1 (1.55m x 0.94m)
Lounge: 24'1 x 13'0 (7.35m x 3.97m)
Conservatory: 12'1 x 12'0 (3.69m x 3.66m)
Snug: 12'1 x 11'1 (3.69m x 3.38m)
Study: 12'1 x 8'0 (3.69m x 2.44m)
Kitchen/Breakfast Room: 16'0 x 11'1 (4.88m x 3.38m)
Utility Room: 11'1 x 7'1 (3.38m x 2.16m)

FIRST FLOOR

Landing
Bedroom 1: 18'1 x 9'1 (5.52m x 2.77m)
En Suite Shower Room 1: 8'1 x 8'0 (2.47m x 2.44m)
Bedroom 2: 15'1 x 12'1 (4.60m x 3.69m)
En Suite Shower Room 2: 10'1 x 8'0 (3.08m x 2.44m)
Bedroom 3: 13'0 x 12'1 (3.97m x 3.69m)
Bedroom 4: 13'0 x 9'1 (3.97m x 2.77m)
Bathroom: 9'0 x 7'1 (2.75m x 2.16m)

OUTSIDE

Integral Double Garage: 18'1 x 15'1 (5.52m x 4.60m)
Driveway
Front and Rear Gardens
Swimming Pool
Outbuilding



Main features

- Impressive executive property set on a generous size plot behind private gates
- Beautifully maintained throughout
- Spacious room sizes and a flexible layout, with rooms that can be utilised for a multitude of uses
- Stunning and mature garden, with a heated swimming pool and useful outbuilding
- Tucked away position on a 'no through road', short walk to the Loose Valley conservation area



Nearest Schools

Primary Schools: Loose Primary 0.6 miles, Tiger Primary 1.2 miles
Secondary Schools: New Line Learning Academy 1.2 miles, Cornwallis Academy 2.0 miles, Maidstone Grammar School 2.4 miles, The Maplesden Noakes School 2.6 miles



Transport Information

Train Stations: Maidstone West 2.7 miles, Bearsted 3.0 miles, Maidstone East 3.1 miles, Maidstone Barracks 3.1 miles



Address

Pickering Street, Loose, Maidstone, Kent, ME15



Directions

For directions to this property please contact us.



Wards
Helping you move forwards

Call Loose Branch 01622 744067 ■ wardsofkent.co.uk



- Legal advice should be taken to verify fixtures/fittings, planning, alterations and/or lease details
- Appliances & services are untested, dimensions are approximate and floor plans are not to scale
- Through a Homewise Home For Life Plan people aged 60+ can secure this property for up to 59% less, by purchasing a Lifetime Lease.

EPC RATING

CURRENT:	POTENTIAL:
D(59)	C(75)

13021642/20240521/AY/VMK