

**OVER 60?**

Secure this property  
for up to **59% less!**



**Price**

**£575,000**

**Freehold**

3x  2x  1x 

White House Farm Gardens, Stile Bridge

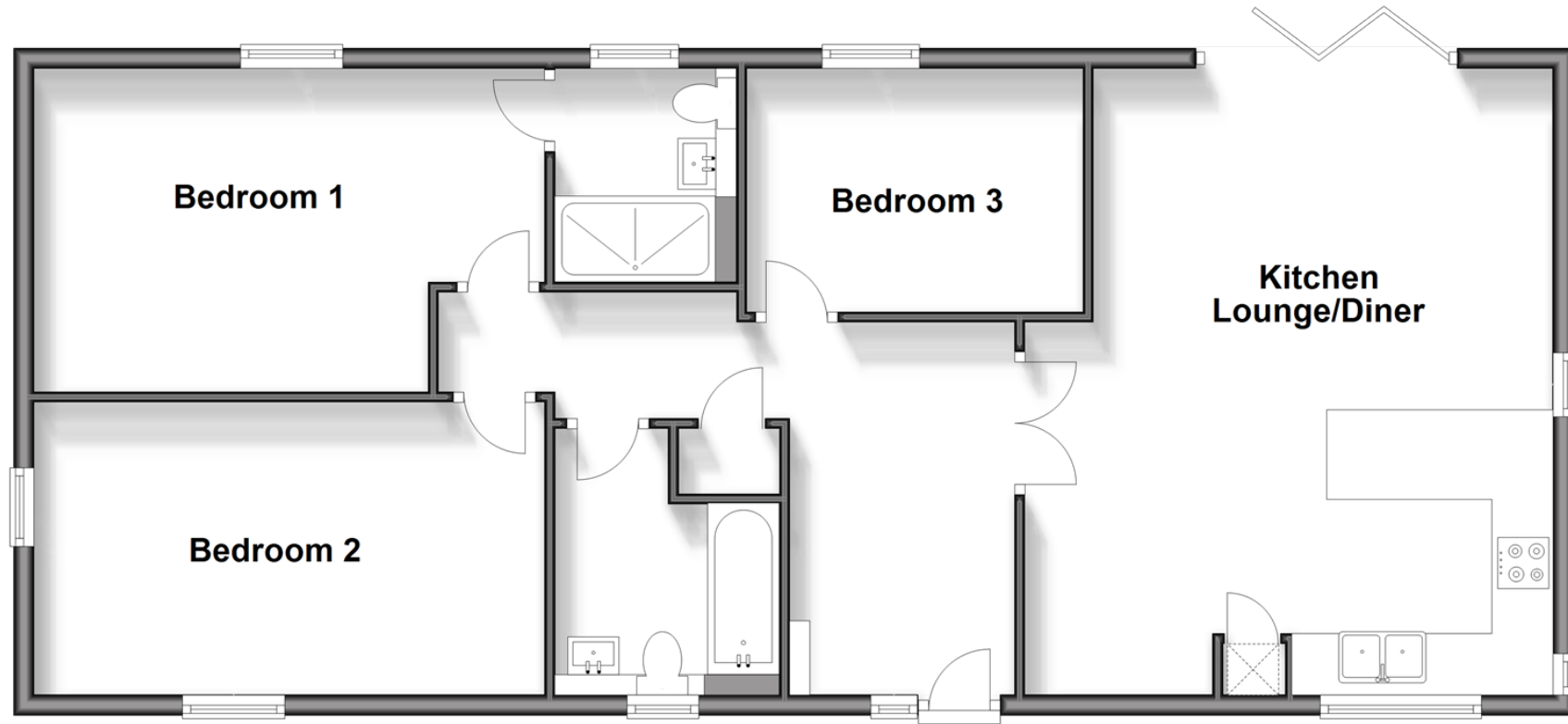
Lane, Linton, Maidstone, Kent, ME17

*Wards*

Helping you move forwards

## Ground Floor

Approx. 91.1 sq. metres (980.9 sq. feet)



## Accommodation

### GROUND FLOOR

Entrance Hall

Kitchen/Lounge/Diner: 20'2 x 16'9 (6.15m x 5.11m)

Bedroom 1: 16'4 x 10'5 (4.98m x 3.18m)

En Suite Shower Room: 6'8 x 5'9 (2.03m x 1.75m)

Bedroom 2: 16'4 x 9'4 (4.98m x 2.85m)

Bedroom 3: 10'9 x 7'8 (3.28m x 2.34m)

Bathroom: 7'3 x 5'5 (2.21m x 1.65m)

### OUTSIDE

Front and Rear Gardens

Off Road Parking

Electric Car Charging Point



## Main features

- Exclusive development of 4 new build detached bungalows
- Eco friendly living with solar panels and electric car charging point
- 10 year structural warranty
- Sociable open plan layout with bi fold doors opening onto a sizable garden, ideal for entertaining



### Nearest Schools

Primary Schools: Boughton Monchelsea Primary 1.6 miles, Coxheath Primary 2.2 miles, Loose Primary 2.6 miles  
Secondary Schools: Cornwallis Academy 1.7 miles, Sutton Valence School 3.1 miles, Maidstone Grammar School 4.1 miles



### Transport Information

Train Stations: Marden 2.4 miles, Staplehurst 2.7 miles, East Farleigh 4.3 miles



### Address

White House Farm Gardens, Stile Bridge Lane, Linton, Maidstone, Kent, ME17



### Directions

For directions to this property please contact us.



*Wards*  
Helping you move forwards

Call Loose Branch 01622 744067 ■ [wardsofkent.co.uk](http://wardsofkent.co.uk)



- If buying to let, the energy rating will need to be improved to at least 'E' rating before you can let the property
- Appliances & services are untested, dimensions are approximate and floor plans are not to scale

- Legal advice should be taken to verify fixtures/fittings, planning, alterations and/or lease details
- Through a Homewise Home For Life Plan people aged 60+ can secure this property for up to 59% less, by purchasing a Lifetime Lease.