



Price

£725,000

Freehold

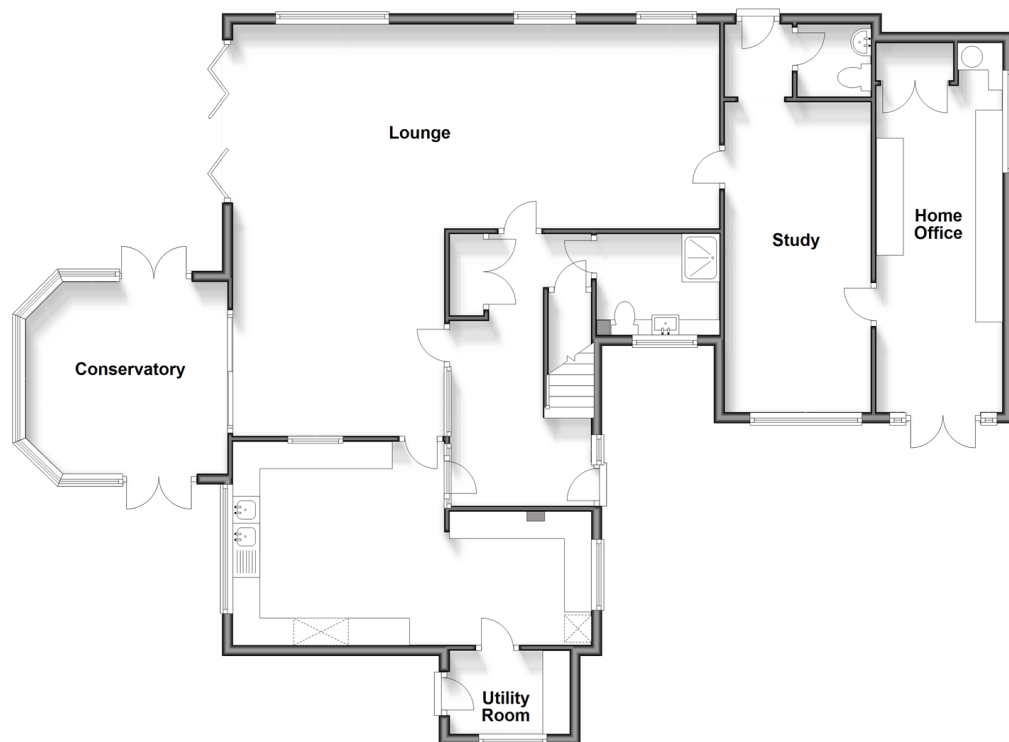
4x  3x  2x 

Farleigh Lane, Maidstone, Kent, ME16

Wards
Helping you move forwards

Ground Floor

Approx. 142.2 sq. metres (1530.6 sq. feet)



First Floor

Approx. 97.9 sq. metres (1054.2 sq. feet)



Accommodation

GROUND FLOOR

Entrance Hall
Kitchen Area 1: 12'1 x 12'0 (3.69m x 3.66m)
Kitchen Area 2: 8'0 x 7'1 (2.44m x 2.16m)
Utility Room: 7'1 x 5'0 (2.16m x 1.53m)
Lounge: (L-shaped) 24'1 x 12'0 (7.35m x 3.66m) plus 12'1 x 16'0 (3.69m x 4.88m)
Conservatory: 12'1 x 12'1 (3.69m x 3.69m)
Study: 18'1 x 8'1 (5.52m x 2.47m)
Downstairs Cloakroom: 4'1 x 4'1 (1.25m x 1.25m)
Home Office: 23'0 x 7'1 (7.02m x 2.16m)
Shower Room 1: 7'0 x 6'0 (2.14m x 1.83m)

FIRST FLOOR

Landing
Bedroom 1: 17'0 x 14'1 (5.19m x 4.30m)
Bedroom 2: 16'1 x 12'1 (4.91m x 3.69m)
Bedroom 3: 13'1 x 12'0 (3.99m x 3.66m)
Bedroom 4: 11'0 x 9'1 (3.36m x 2.77m)
Bathroom: 6'0 x 6'0 (1.83m x 1.83m)
Shower Room 2: 15'1 x 4'1 (4.60m x 1.25m)

OUTSIDE

Off Road Parking
Front, Side and Rear Gardens
Summer House: 10'0 x 7'2 (3.05m x 2.19m)
Shed
Outbuilding/Home Office: 14'1 x 11'1 (4.30m x 3.38m)
2 Outbuildings



Main features

- Unique and spacious home set in a generous gated plot
- Private and secure garden
- Versatile layout, with a study, home office and outbuilding/home office, ideal for a home run business, or additional living space
- Semi rural village location, walking distance to East Farleigh mainline train station
- NO FORWARD CHAIN



Nearest Schools

Primary Schools: East Farleigh Primary 0.5 miles, West Borough Primary 0.8 miles, Barming Primary 0.8 miles
Secondary Schools: Oakwood Park Grammar School 1.0 miles, St Augustine Academy 1.0 miles, St Simon Stock Catholic School 1.2 miles



Transport Information

Train Stations: East Farleigh 0.5 miles, Maidstone West 1.6 miles, Maidstone Barracks 1.9 miles



Address

Farleigh Lane, Maidstone, Kent, ME16



Directions

For directions to this property please contact us.



Wards
Helping you move forwards

Call Loose Branch 01622 744067 ■ wardsofkent.co.uk



■ Legal advice should be taken to verify fixtures/fittings, planning, alterations and/or lease details ■ Appliances & services are untested, dimensions are approximate and floor plans are not to scale



13021859/20240523/AY/VMK