

OVER 60?

You could get up to
59% off the price!*



Price

£200,000

Leasehold

2x  2x  1x 

The Farrowes, Maidstone, Kent, ME15

Wards

Helping you move forwards



Main features

- Well presented first floor apartment
- Allocated parking and communal gardens
- Open plan living, with large windows and balcony
- Short walk to local shops, doctors, primary school and bus stop
- Picturesque country walks nearby, yet just a short drive into Maidstone town centre

Accommodation

FIRST FLOOR

Entrance Hall

Lounge/Kitchen/Diner: 22'1 x 11'11 (6.74m x 3.63m)

Balcony

Bedroom 1: 12'7 x 10'8 (3.84m x 3.25m)

En Suite Shower Room: 6'6 x 6'0 (1.98m x 1.83m)

Bedroom 2: 12'0 x 8'7 (3.66m x 2.62m)

Bathroom: 6'9 x 6'5 (2.06m x 1.96m)

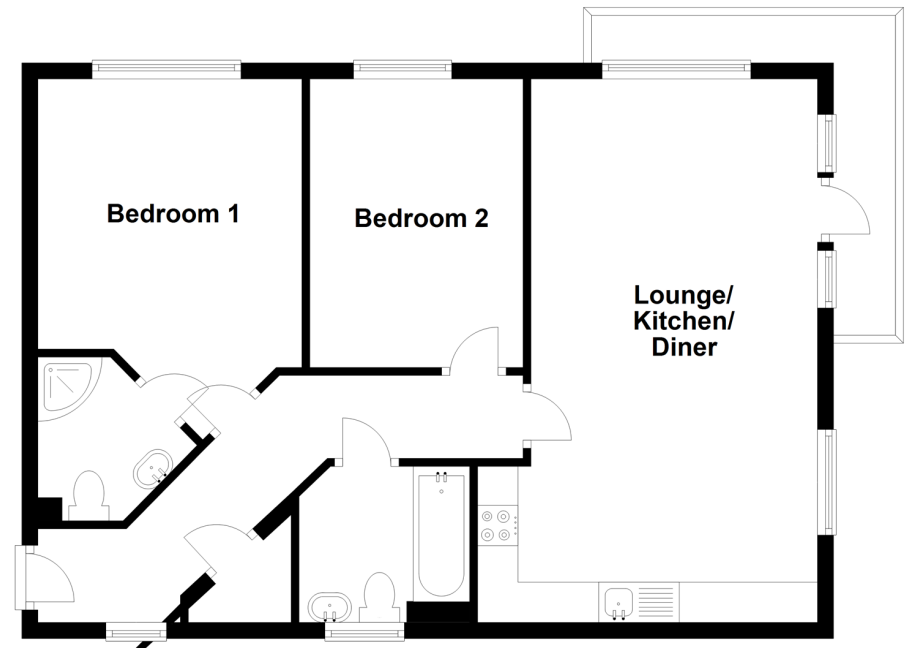
OUTSIDE

Allocated Parking

Communal Gardens

First Floor

Approx. 65.3 sq. metres (703.3 sq. feet)



Call Loose - 01622 744067 ■ wardsof Kent.co.uk

- Legal advice should be taken to verify fixtures/fittings, planning, alterations and/or lease details
- Our Homewise partnership offer a 'Home for Life' plan to buyers over 60, granting a lifetime lease for your protection and reducing the purchase price by up to 59%

■ Appliances & services are untested, dimensions are approximate and floor plans are not to scale



13021465/20220219/KIR/CW