



Guide Price
£450,000

Freehold

4x  2x  2x 

**Old Loose Hill, Loose,
Maidstone, Kent, ME15**

OVER 60?

Secure this property
for up to **59% less!**

Wards
Helping you move forwards



Main features

- Truly unique family home, finished and presented to a high standard
- Fabulous views across Loose village to the rear
- Short walk to the charming village pub, Post Office/shop and sought after Loose Primary School
- Deceptively spacious home, arranged over 3 floors
- Picturesque Loose Valley conservation area on the doorstep for countryside walks

Accommodation

GROUND FLOOR

Entrance Hall
 Downstairs Cloakroom: 5'7 x 3'7 (1.70m x 1.09m)
 Lounge: 12'4 x 11'4 (3.76m x 3.46m)
 Study: 8'1 x 6'8 (2.47m x 2.03m)
 Kitchen/Breakfast Room: 14'5 x 12'3 (4.40m x 3.74m)
 Utility Room: 5'7 x 5'5 (1.70m x 1.65m)
 Library: 15'2 x 6'3 (4.63m x 1.91m)
 Dining Area: 11'5 x 11'1 (3.48m x 3.38m)

FIRST FLOOR

Landing
 Bedroom 1: 12'4 x 11'4 (3.76m x 3.46m)
 En Suite Shower Room: 8'8 x 6'8 (2.64m x 2.03m)
 Bedroom 2: 17'5 x 10'3 (5.31m x 3.13m)
 Bedroom 3/Dressing Room: 12'3 x 7'0 (3.74m x 2.14m)
 Bathroom: 11'1 x 5'5 (3.38m x 1.65m)

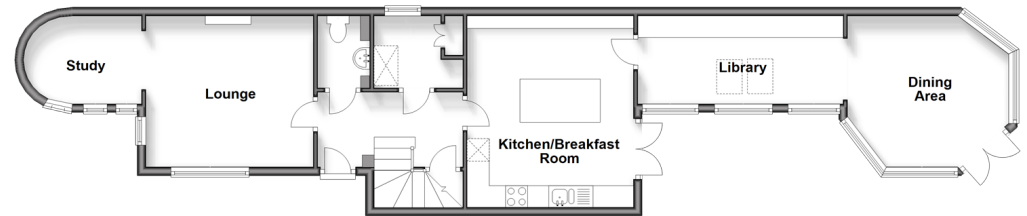
SECOND FLOOR

Bedroom 4: 12'4 x 7'0 (3.76m x 2.14m)

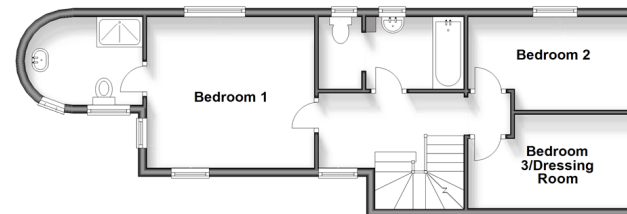
OUTSIDE

Off Road Parking
 Side and Rear Gardens

Ground Floor
 Approx. 69.7 sq. metres (750.7 sq. feet)



First Floor
 Approx. 49.5 sq. metres (532.6 sq. feet)



Second Floor
 Approx. 18.2 sq. metres (195.5 sq. feet)



Call Loose - 01622 744067 ■ wardsokent.co.uk

■ Legal advice should be taken to verify fixtures/fittings, planning, alterations and/or lease details
 ■ Through a Homewise Home For Life Plan people aged 60+ can secure this property for up to 59% less, by purchasing a Lifetime Lease.

■ Appliances & services are untested, dimensions are approximate and floor plans are not to scale



13021869/20240402/AY/AS