

OVER 60?

Secure this property
for up to **59% less!**



Guide Price
£575,000
Freehold

4x  2x  1x 

Pickering Street, Loose, Maidstone, Kent,
ME15

Wards
Helping you move forwards



Main features

- Well presented and spacious family home offering a versatile layout
- Great size, mature and private rear garden
- Large, yet cosy lounge leading to a fantastic size conservatory
- Bright and airy kitchen and dining area, offering a great entertaining space
- Sought after location, just a short walk to popular Loose Primary School, local shops and amenities

Accommodation

GROUND FLOOR

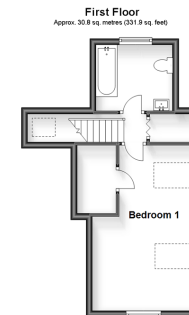
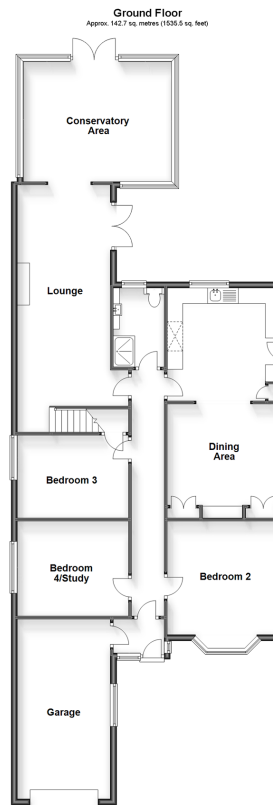
Entrance Porch
Hallway
Lounge: 26'2 x 11'9 (7.98m x 3.58m)
Conservatory Area: 15'8 x 13'4 (4.78m x 4.07m)
Kitchen: 12'3 x 12'0 (3.74m x 3.66m)
Dining Area: 12'0 x 10'7 (3.66m x 3.23m)
Bedroom 2: 12'1 x 12'1 (3.69m x 3.69m)
Bedroom 3: 12'5 x 8'9 (3.79m x 2.67m)
Bedroom 4/Study: 11'8 x 10'0 (3.56m x 3.05m)
Shower Room: 8'3 x 5'5 (2.52m x 1.65m)

FIRST FLOOR

Landing
Bedroom 1: 17'5 x 11'6 (5.31m x 3.51m)
Bathroom: 8'2 x 6'10 (2.49m x 2.08m)

OUTSIDE

Garage and Driveway
Front and Rear Gardens
Greenhouse
2 Sheds



Call Loose - 01622 744067 ■ wardsofkent.co.uk

■ Legal advice should be taken to verify fixtures/fittings, planning, alterations and/or lease details
■ Through a Homewise Home For Life Plan people aged 60+ can secure this property for up to 59% less, by purchasing a Lifetime Lease.

■ Appliances & services are untested, dimensions are approximate and floor plans are not to scale