

OVER 60?

Secure this property
for up to **59% less!**



Guide Price

£700,000

Freehold

4x  3x  3x 

Amsbury Road, Coxheath, Maidstone, Kent,

ME17

Wards

Helping you move forwards



Main features

- Tucked away down a private driveway offering seclusion
- Useful study, ideal for those who work from home
- First time on the market for 50 years, rare opportunity to own this good size family home, with potential to extend further subject to planning and consents
- Set on a generous 0.348 acre plot, with beautifully maintained and mature gardens and a detached double garage
- Versatile layout, ground floor bedroom 1, with en suite shower room and walk-in-wardrobe

Accommodation

GROUND FLOOR

Entrance Porch
Hallway
Downstairs Cloakroom: 6'3 x 2'8 (1.91m x 0.81m)
Study: 10'8 x 10'6 (3.25m x 3.20m)
Lounge/Diner: 29'5 x 12'8 (8.97m x 3.86m)
Snug: 11'2 x 10'8 (3.41m x 3.25m)
Kitchen/Breakfast Room: 16'6 x 9'6 (5.03m x 2.90m)
Utility Room: 8'5 x 6'2 (2.57m x 1.88m)
Pantry
Bedroom 1: 13'5 x 11'5 (4.09m x 3.48m)
En Suite Shower Room 1: 7'10 x 4'10 (2.39m x 1.47m)
Walk-in-Wardrobe: 6'3 x 5'0 (1.91m x 1.53m)

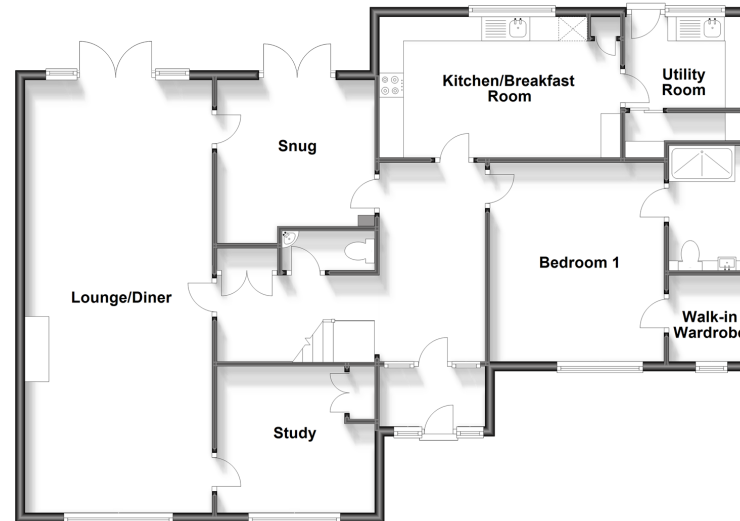
FIRST FLOOR

Landing
Bedroom 2: 14'0 x 10'1 (4.27m x 3.08m)
Eaves
En Suite Shower Room 2: 8'2 x 4'5 (2.49m x 1.35m)
Bedroom 3: 14'0 x 10'1 (4.27m x 3.08m)
Eaves
Bedroom 4: 9'2 x 8'7 (2.80m x 2.62m)
Bathroom: 9'4 x 5'8 (2.85m x 1.73m)

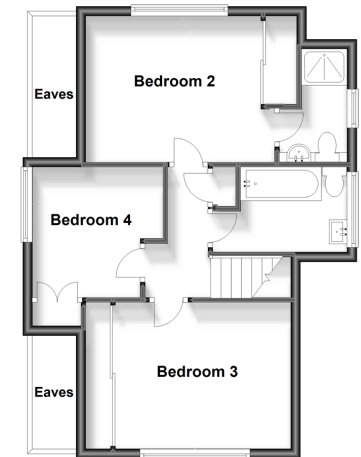
OUTSIDE

Double Garage and Driveway
Front, Side and Rear Gardens
Summer House
Pond
Shed

Ground Floor
Approx. 122.6 sq. metres (1320.1 sq. feet)



First Floor
Approx. 47.8 sq. metres (514.7 sq. feet)



Call Loose - 01622 744067 ■ wardsof Kent.co.uk

- Legal advice should be taken to verify fixtures/fittings, planning, alterations and/or lease details
- Through a Homewise Home For Life Plan people aged 60+ can secure this property for up to 59% less, by purchasing a Lifetime Lease.

- Appliances & services are untested, dimensions are approximate and floor plans are not to scale



13021592/20230920/VMK/VMK