



Guide Price
£360,000

Freehold

3x  2x  1x 

**Brampton Field, Ditton,
Aylesford, Kent, ME20**

OVER 60?

Secure this property
for up to **59% less!**

Wards
Helping you move forwards

Accommodation

GROUND FLOOR

Entrance Hall

Cloakroom

Kitchen: 11'0 x 6'3 (3.36m x 1.91m)

Lounge/Diner: 15'9 x 14'0 at widest point (4.80m x 4.27m)

FIRST FLOOR

Landing

Bedroom 2: 13'5 x 11'0 (4.09m x 3.36m)

Bedroom 3: 13'4 (4.07m) x 8'3 (2.52m) narrowing to 4'7 (1.40m)

Bathroom

SECOND FLOOR

Landing

Bedroom 1: 14'9 (4.50m) x 13'4 (4.07m) narrowing to 10'0 (3.05m)

En-Suite Shower Room

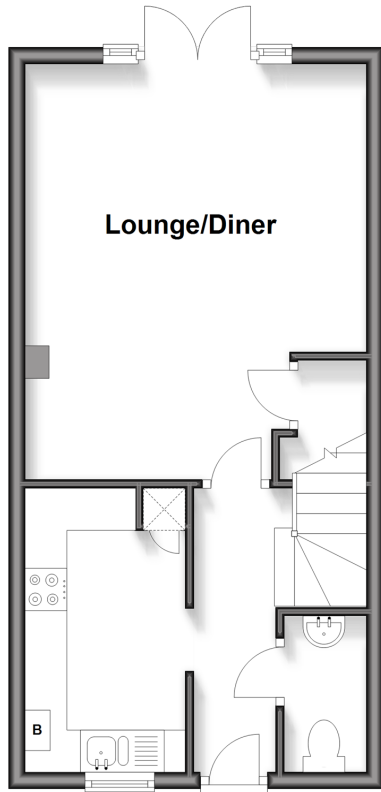
OUTSIDE

Front & Rear Gardens

Garage & Parking Space

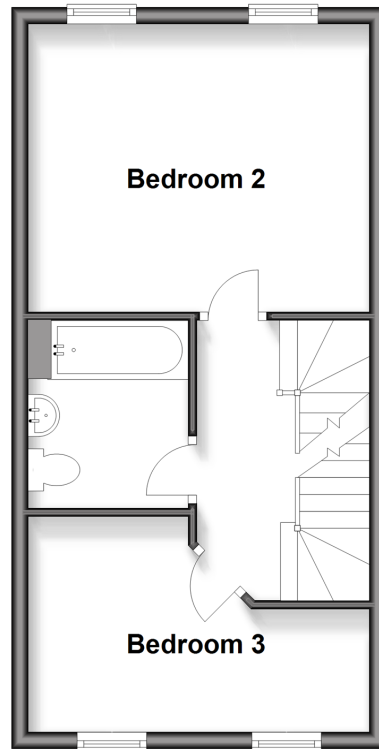
Ground Floor

Approx. 34.3 sq. metres (369.1 sq. feet)



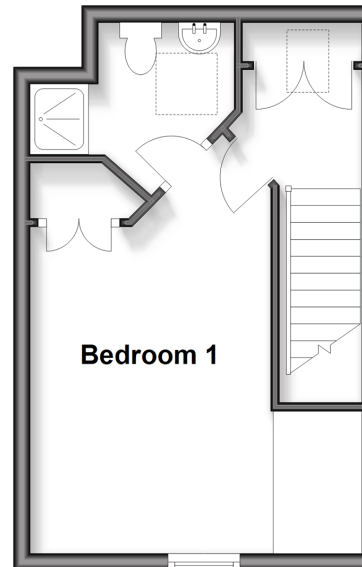
First Floor

Approx. 34.3 sq. metres (369.1 sq. feet)



Second Floor

Approx. 24.4 sq. metres (262.8 sq. feet)





Main features

- Well presented throughout
- Enjoy the luxury of an en-suite shower room, a bathroom & a ground floor cloakroom
- Spacious & sociable lounge/diner - ideal for entertaining & bringing the family together
- Good schools & shops within walking distance
- Excellent commuter links by road & rail close by



Nearest Schools

Primary Schools: Ditton C of E Junior School 0.2 miles, Brookfield Junior School 1.2 miles, Lunsford Primary 1.2 miles. Secondary Schools: Aylesford School 1.2 miles, The Malling School 1.6 miles, The Maplesden Noakes School 2.7 miles



Transport Information

Train Stations: Aylesford 0.9 miles, West Malling 1.5 miles, East Malling 2.1 miles



Address

Brampton Field, Ditton, Aylesford, Kent, ME20



Directions

For directions to this property please contact us.



Call Larkfield Branch 01732 847877 ■ wardsofkent.co.uk



- Legal advice should be taken to verify fixtures/fittings, planning, alterations and/or lease details
- Appliances & services are untested, dimensions are approximate and floor plans are not to scale
- Through a Homewise Home For Life Plan people aged 60+ can secure this property for up to 50% less, by purchasing a Lifetime Lease.



12935551/20251128/JT/JT