



OVER 60?

Secure this property
for up to **59% less!**

Guide Price
£325,000

Freehold

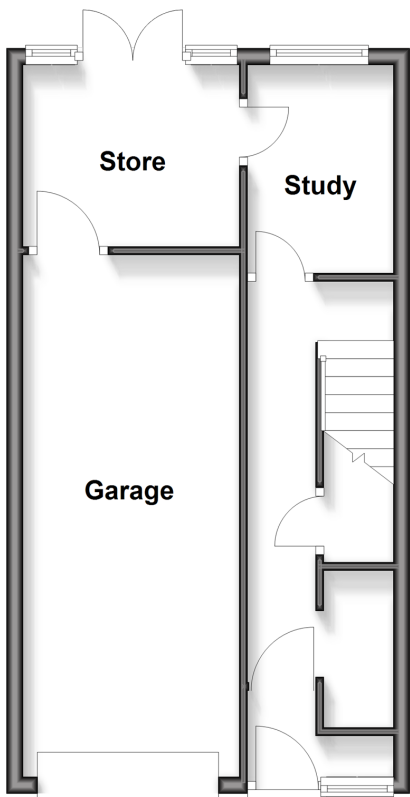
3x  1x  2x 

**Chapman Way, East
Malling, Kent, ME19**

Wards
Helping you move forwards

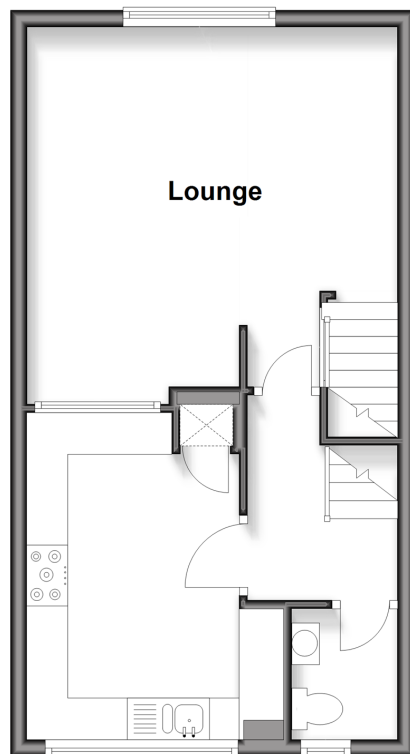
Ground Floor

Approx. 38.7 sq. metres (416.6 sq. feet)



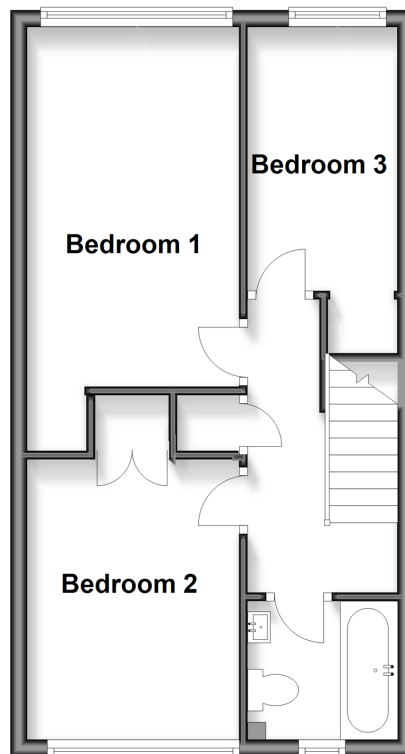
First Floor

Approx. 38.7 sq. metres (416.2 sq. feet)



Second Floor

Approx. 38.8 sq. metres (417.6 sq. feet)



Accommodation

GROUND FLOOR

Entrance Porch

Hallway

Study: 8'1 x 5'10 (2.47m x 1.78m)

Store: 8'7 x 7'0 (2.62m x 2.14m)

FIRST FLOOR

Landing

Cloakroom

Lounge: 15'3 x 14'10 (4.65m x 4.52m)

Kitchen: 13'0 x 8'10 (3.97m x 2.69m)

SECOND FLOOR

Landing

Bedroom 1: 14'5 x 8'10 (4.40m x 2.69m)

Bedroom 2: 11'2 x 8'10 (3.41m x 2.69m)

Bedroom 3: 10'4 x 6'0 (3.15m x 1.83m)

Bathroom

OUTSIDE

Driveway

Integral Garage: 20'10 x 8'11 (6.35m x 2.72m)

Front, Side & Rear Gardens

Shed



Main features

- Great flexibility to use the living space to suit you
- Spacious lounge - ideal for bringing the family together
- Work from home with ease in the ground floor study
- Corner plot offering a large side & rear garden allowing plenty of space for children to play
- Set in a quiet Close



Nearest Schools

Primary Schools: St James the Great Primary and Nursery School 0.0 miles, More Park Catholic Primary 0.6 miles, Ditton C of E Junior School 0.8 miles. Secondary Schools: The Malling School 0.4 miles, Grange Park School 1.1 miles, Aylesford School 1.4 miles



Transport Information

Train Stations: West Malling 0.7 miles, East Malling 0.9 miles, New Hythe 1.6 miles



Address

Chapman Way, East Malling, Kent, ME19



Directions

For directions to this property please contact us.



Call Larkfield Branch 01732 847877 ■ wardsofkent.co.uk



- Legal advice should be taken to verify fixtures/fittings, planning, alterations and/or lease details
- Appliances & services are untested, dimensions are approximate and floor plans are not to scale
- Through a Homewise Home For Life Plan people aged 60+ can secure this property for up to 50% less, by purchasing a Lifetime Lease.



12935193/20251027/CK/RT