



Guide Price
£245,000

Leasehold

2x  2x  1x 

**The Lakes, Larkfield,
Kent, ME20**

OVER 60?

Secure this property
for up to **59% less!**

Wards
Helping you move forwards



Main features

- Beautifully presented throughout
- Stunning fitted kitchen making cooking a pleasure
- Enjoy the luxury of both an en-suite bathroom & a shower room
- Good shops & lovely lakeside walks on your doorstep
- Excellent commuter links by road & rail within easy reach

Accommodation

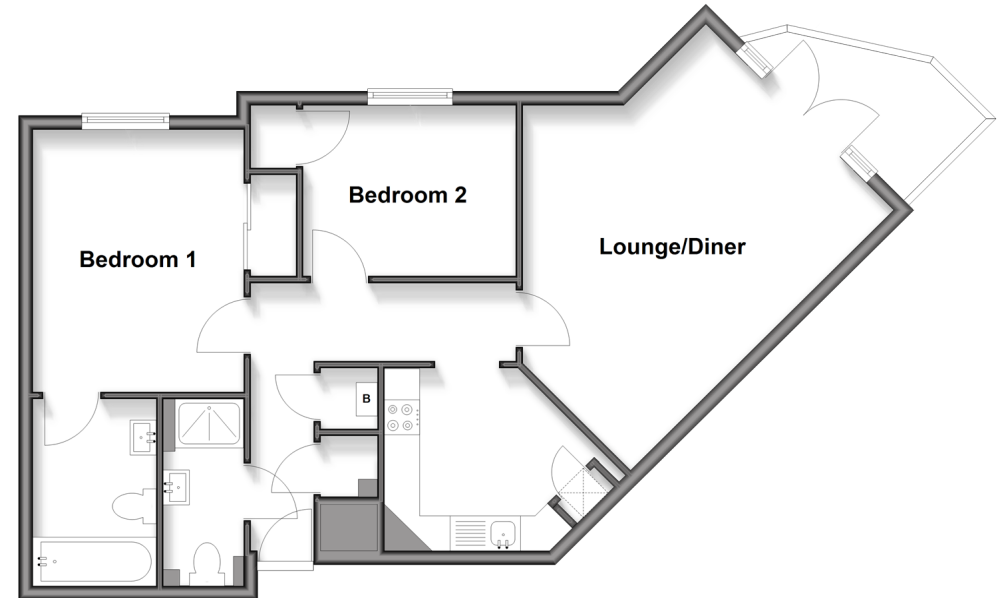
GROUND FLOOR

Entrance Hall
 Kitchen: 9'3 x 8'2 (2.82m x 2.49m)
 Lounge/Diner: 16'9 x 13'10 (5.11m x 4.22m)
 Bedroom 1: 12'3 x 9'6 (3.74m x 2.90m)
 En-Suite Bathroom
 Bedroom 2: 9'10 x 8'0 (3.00m x 2.44m)
 Shower Room

OUTSIDE

Terrace
 Allocated Parking
 Communal Garden

Ground Floor
 Approx. 66.7 sq. metres (717.6 sq. feet)



Call Larkfield - 01732 847877 ■ wardsofkent.co.uk

■ Legal advice should be taken to verify fixtures/fittings, planning, alterations and/or lease details
 ■ Through a Homewise Home For Life Plan people aged 60+ can secure this property for up to 50% less, by purchasing a Lifetime Lease.

■ Appliances & services are untested, dimensions are approximate and floor plans are not to scale