



**Price**  
**£300,000**

**Freehold**

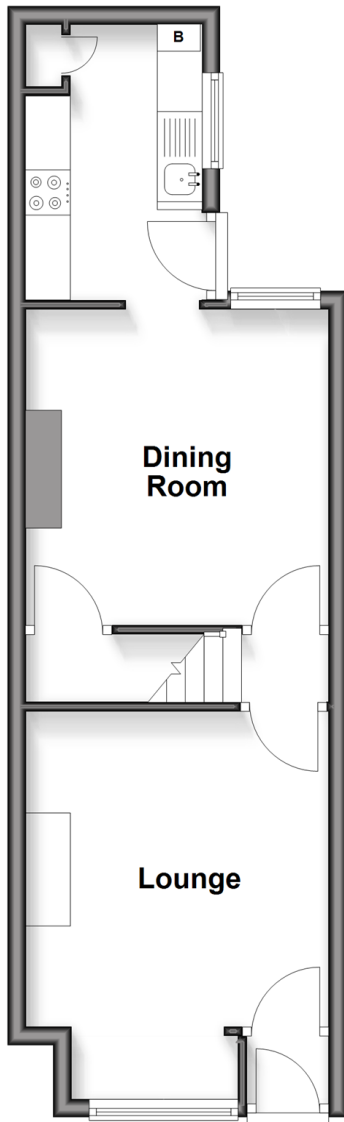
3x  1x  2x 

**Bell Lane, Ditton,  
Aylesford, Kent, ME20**

*Wards*  
Helping you move forwards

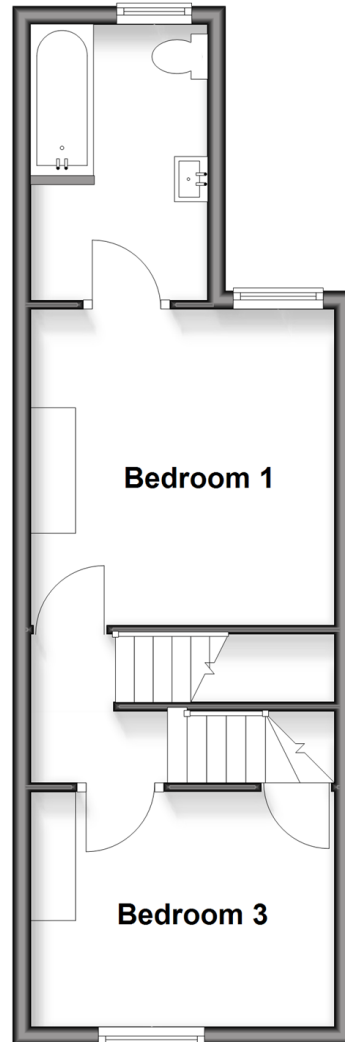
## Ground Floor

Approx. 35.3 sq. metres (380.4 sq. feet)



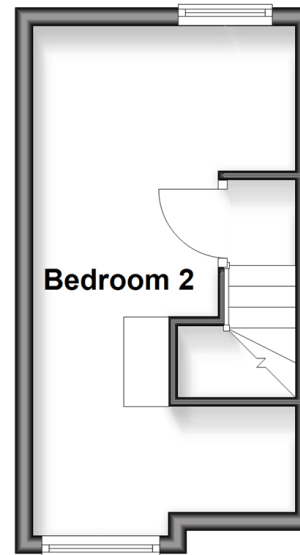
## First Floor

Approx. 33.0 sq. metres (355.7 sq. feet)



## Second Floor

Approx. 16.1 sq. metres (173.5 sq. feet)



## Accommodation

### GROUND FLOOR

Entrance Porch

Lounge: 14'8 x 11'2 (4.47m x 3.41m)

Dining Room: 11'6 x 11'0 (3.51m x 3.36m)

Kitchen: 9'11 x 6'5 (3.02m x 1.96m)

### FIRST FLOOR

Landing

Bedroom 1: 11'7 x 11'0 (3.53m x 3.36m)

Bathroom

Bedroom 3: 11'1 x 8'6 (3.38m x 2.59m)

### SECOND FLOOR

Landing

Bedroom 2: 18'9 (5.72m) x 9'9 (2.97m)  
narrowing to 6'9 (2.06m)

### OUTSIDE

Front & Rear Gardens





## Main features

- Well presented throughout
- Good size bedrooms - no box room to worry about
- Entertain in style in the separate dining room
- Cosy lounge with a lovely log burner to enjoy
- Spacious bathroom accessed via bedroom 1



### Nearest Schools

Primary Schools: Ditton C of E Junior School 0.5 miles, Brookfield Junior School 0.8 miles, Lunsford Primary 0.8 miles. Secondary Schools: Aylesford School 1.0 miles, The Malling School 1.2 miles, Grange Park School 2.9 miles



### Transport Information

Train Stations: East Malling 1.6 miles, Barming 1.6 miles, New Hythe 1.8 miles



### Address

Bell Lane, Ditton, Aylesford, Kent, ME20



### Directions

For directions to this property please contact us.





Call Larkfield Branch 01732 847877 ■ [wardsofkent.co.uk](http://wardsofkent.co.uk)



■ Legal advice should be taken to verify fixtures/fittings, planning, alterations and/or lease details ■ Appliances & services are untested, dimensions are approximate and floor plans are not to scale



12935358/20251114/RT2/JT