



OVER 60?

Secure this property
for up to **59% less!**

Guide Price

£675,000

Freehold

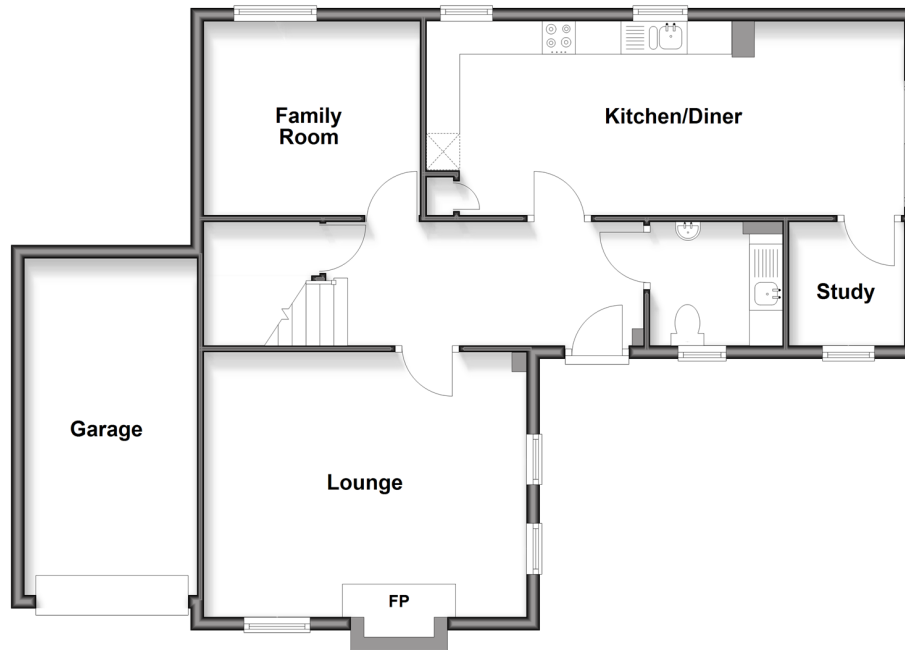
4x  3x  2x 

**Vigor Close, East
Malling, Kent, ME19**

Wards
Helping you move forwards

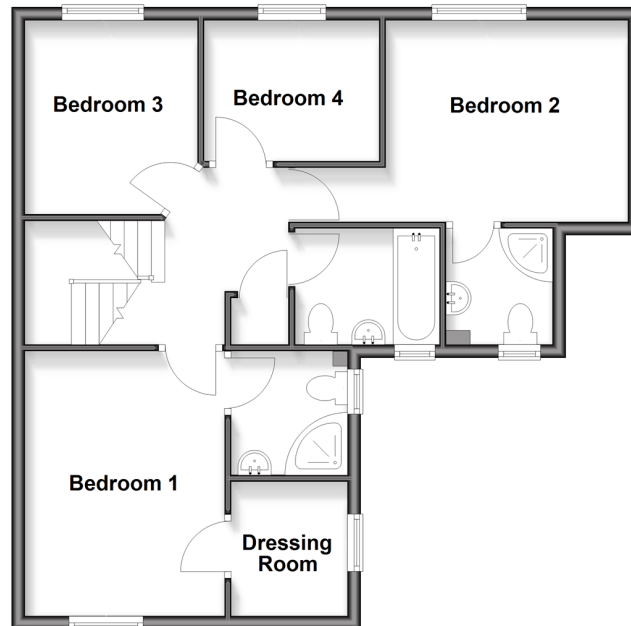
Ground Floor

Approx. 85.7 sq. metres (922.2 sq. feet)



First Floor

Approx. 62.7 sq. metres (675.3 sq. feet)



Accommodation

GROUND FLOOR

Entrance Hall

Family Room: 10'3 x 9'7 (3.13m x 2.92m)

Lounge: 15'11 x 13'1 (4.85m x 3.99m)

Utility/Cloakroom: 6'6 x 6'1 (1.98m x 1.86m)

Kitchen/Diner: 23'7 x 9'5 (7.19m x 2.87m)

Study: 6'2 x 5'8 (1.88m x 1.73m)

FIRST FLOOR

Landing

Bedroom 1: 13'1 x 10'0 (3.99m x 3.05m)

Dressing Room: 6'6 x 5'2 (1.98m x 1.58m)

En-Suite Shower Room

Bedroom 2: 11'11 x 9'11 (3.63m x 3.02m)

En-Suite Shower Room

Bedroom 3: 9'7 x 8'6 (2.92m x 2.59m)

Bedroom 4: 8'7 x 6'10 (2.62m x 2.08m)

Bathroom

OUTSIDE

Front, Side & Rear Gardens

Driveway & Garage



Main features

- Well presented throughout
- Enjoy the luxury of two en-suite shower rooms & a bathroom - perfect for the largest of families
- Useful utility & cloakroom
- Close to good schools, shops & leisure facilities
- Excellent commuter links - walk to East Malling rail station or hop onto the M20



Nearest Schools

Primary Schools: St James the Great Primary and Nursery School 0.3 miles, More Park Catholic Primary 0.8 miles, Ditton C of E Junior School 0.9 miles. Secondary Schools: The Malling School 0.1 miles, Grange Park School 1.4 miles, Aylesford School 1.4 miles



Transport Information

Train Stations: East Malling 0.2 miles, West Malling 0.8 miles, Aylesford 1.5 miles



Address

Vigor Close, East Malling, Kent, ME19



Directions

For directions to this property please contact us.



Call Larkfield Branch 01732 847877 ■ wardsofkent.co.uk



- Legal advice should be taken to verify fixtures/fittings, planning, alterations and/or lease details
- Appliances & services are untested, dimensions are approximate and floor plans are not to scale
- Through a Homewise Home For Life Plan people aged 60+ can secure this property for up to 50% less, by purchasing a Lifetime Lease.



12935541/20251001/JT/JT