



OVER 60?

Secure this property
for up to **59% less!**

Price

£290,000

Freehold

3x  1x  2x 

**Shaftesbury Close, East
Malling, Kent, ME19**

Wards
Helping you move forwards



Main features

- Well presented throughout
- All bedrooms are a good size - no box room to worry about
- Useful ground floor cloakroom
- Handy utility room - freeing up space in the kitchen
- Lovely sunny & secluded rear garden to enjoy

Accommodation

GROUND FLOOR

Entrance Hall

Cloakroom

Lounge: 12'7 x 11'8 (3.84m x 3.56m)

Dining Room: 11'1 x 8'10 (3.38m x 2.69m)

Conservatory: 12'9 x 8'8 (3.89m x 2.64m)

Kitchen: 10'6 x 9'9 (3.20m x 2.97m)

Lobby

Utility: 13'2 x 4'3 (4.02m x 1.30m)

FIRST FLOOR

Landing

Bedroom 1: 11'6 x 10'11 (3.51m x 3.33m)

Bedroom 2: 12'2 x 8'5 (3.71m x 2.57m)

Bedroom 3: 8'8 x 8'3 (2.64m x 2.52m)

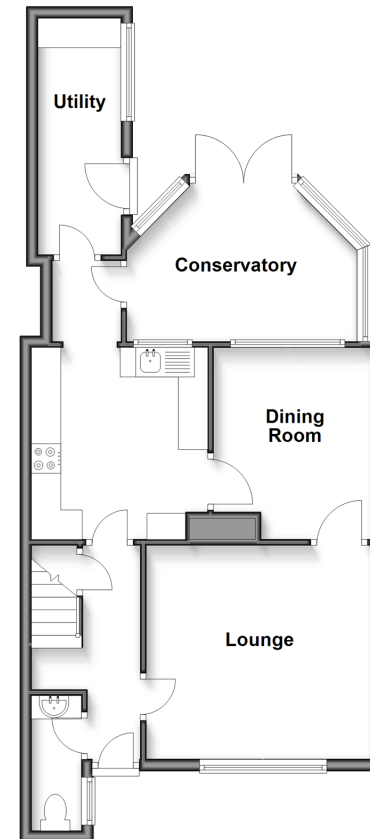
Bathroom

OUTSIDE

Front & Rear Gardens

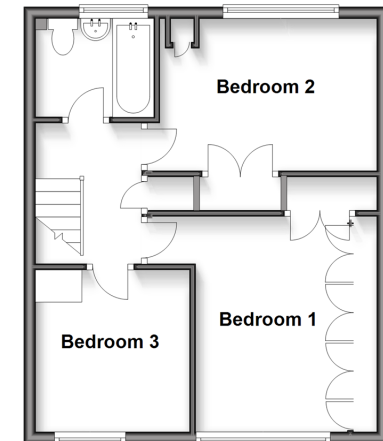
Ground Floor

Approx. 627.5 sq. feet



First Floor

Approx. 440.1 sq. feet



Call Larkfield - 01732 847877 ■ wardsof Kent.co.uk

- Legal advice should be taken to verify fixtures/fittings, planning, alterations and/or lease details
- Appliances & services are untested, dimensions are approximate and floor plans are not to scale
- Through a Homewise Home For Life Plan people aged 60+ can secure this property for up to 59% less, by purchasing a Lifetime Lease.



12935515/20250612/CK/JT