



Price
£400,000

Freehold

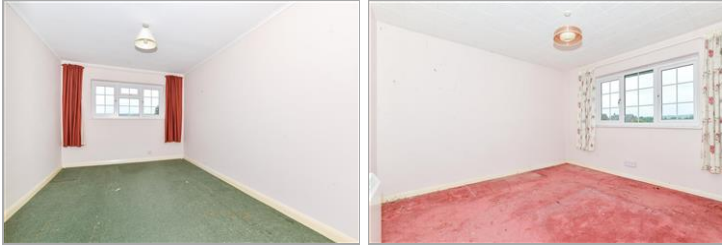
3x  1x  1x 

**The Avenue,
Greenacres, Aylesford,
Kent, ME20**

OVER 60?

Secure this property
for up to **59% less!**

Wards
Helping you move forwards



Main features

- Sociable kitchen/diner - perfect for today's lifestyle
- A great opportunity to add your own stamp to the property
- Private & secluded rear garden
- Leisure facilities aplenty - Larkfield Leisure Centre & Leybourne Lakes Country Park nearby
- Walk to well reputed schools

Accommodation

GROUND FLOOR

Entrance Hall

Cloakroom

Lounge: 23'3 x 10'10 (7.09m x 3.30m)

Kitchen: 9'8 x 8'5 (2.95m x 2.57m)

Dining Area: 13'0 x 9'6 (3.97m x 2.90m)

FIRST FLOOR

Landing

Bedroom 1: 13'0 x 9'6 (3.97m x 2.90m)

Dressing Area: 8'9 x 8'0 (2.67m x 2.44m)

Bedroom 2: 11'4 x 10'10 (3.46m x 3.30m)

Bedroom 3: 10'10 x 8'2 (3.30m x 2.49m)

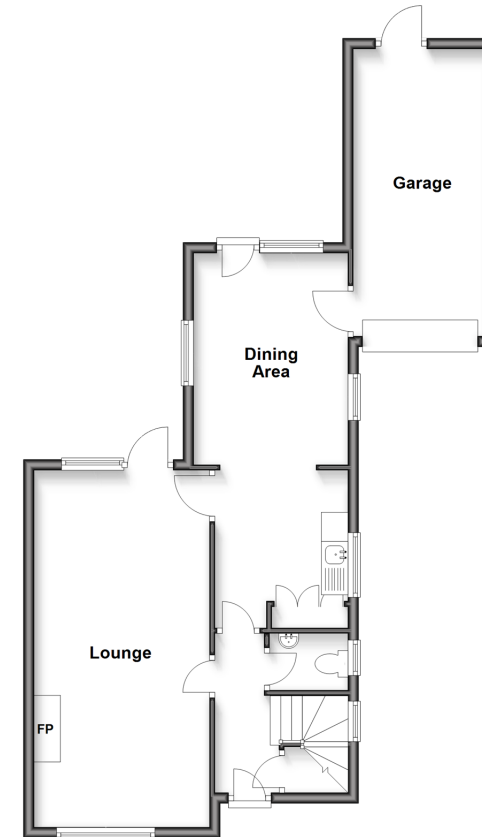
Bathroom

OUTSIDE

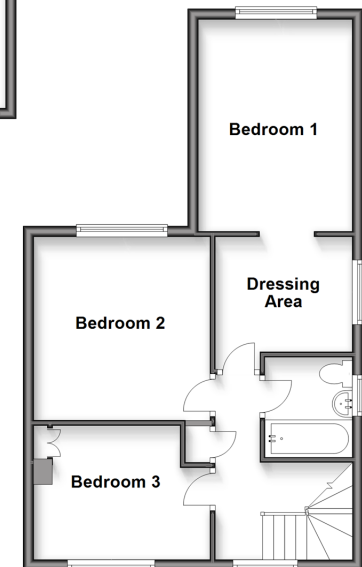
Driveway & Garage

Front & Rear Gardens

Ground Floor
Approx. 63.6 sq. metres (684.4 sq. feet)



First Floor
Approx. 48.2 sq. metres (519.2 sq. feet)



Call Larkfield - 01732 847877 ■ wardsofkent.co.uk

- Legal advice should be taken to verify fixtures/fittings, planning, alterations and/or lease details
- Appliances & services are untested, dimensions are approximate and floor plans are not to scale
- Through a Homewise Home For Life Plan people aged 60+ can secure this property for up to 59% less, by purchasing a Lifetime Lease.



12930706/20250519/CK/JT