



OVER 60?

Secure this property
for up to **59% less!**

Price

£600,000

Freehold

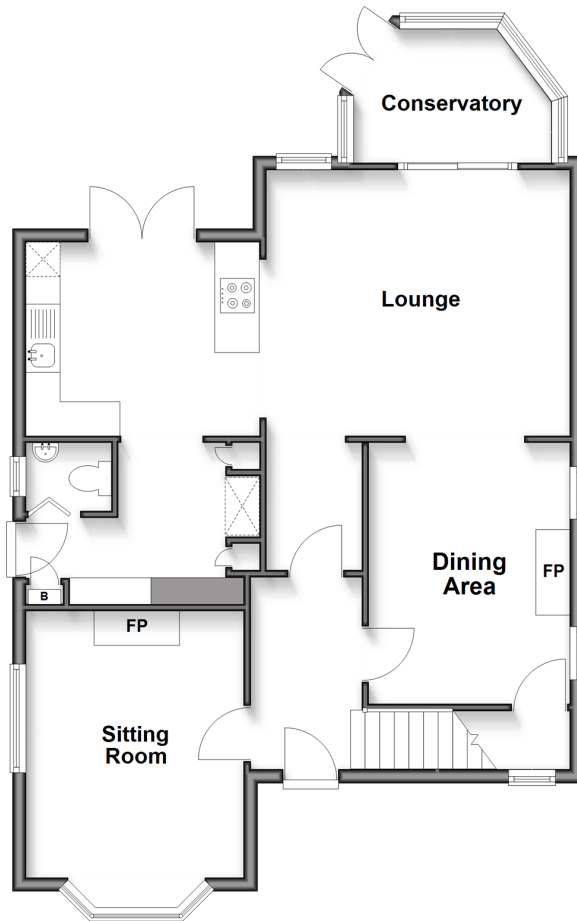
4x  2x  1x 

**Bull Lane, Eccles,
Aylesford, Kent, ME20**

Wards
Helping you move forwards

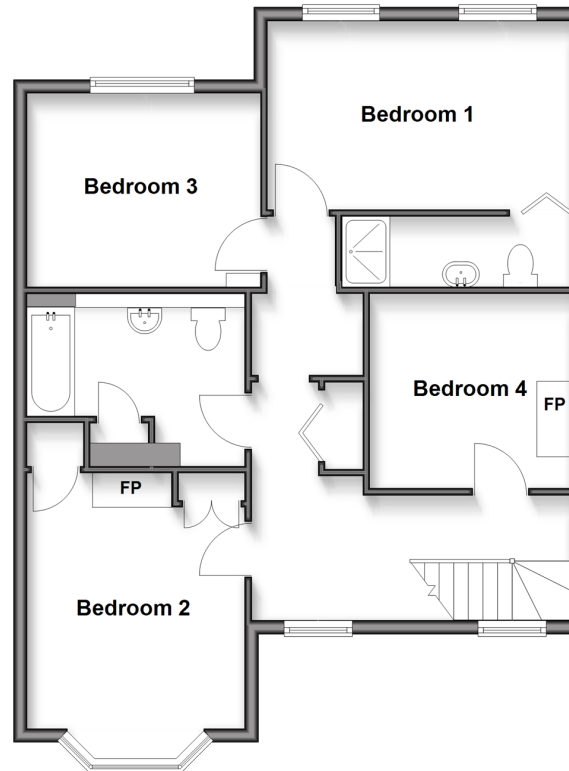
Ground Floor

Approx. 76.7 sq. metres (825.3 sq. feet)



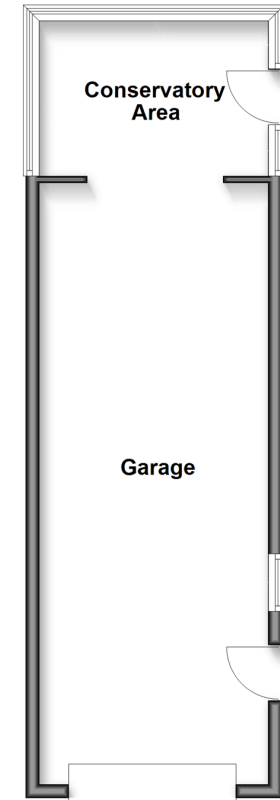
First Floor

Approx. 71.5 sq. metres (769.1 sq. feet)



Outbuilding

Approx. 37.5 sq. metres (404.0 sq. feet)



Accommodation

GROUND FLOOR

Entrance Hall
 Sitting Room: 13'0 x 10'2 (3.97m x 3.10m)
 Dining Area: 12'6 x 9'6 (3.81m x 2.90m)
 Lobby: 6'6 x 4'7 (1.98m x 1.40m)
 Lounge: 14'5 x 13'4 (4.40m x 4.07m)
 Conservatory: 7'3 x 6'10 (2.21m x 2.08m)
 Kitchen: 11'5 x 8'9 (3.48m x 2.67m)
 Pantry Area: 6'6 x 6'4 (1.98m x 1.93m) narrowing to 4'10 x 4'4 (1.47m x 1.32m)
 Cloakroom

FIRST FLOOR

Landing
 Bedroom 1: 14'8 x 9'9 (4.47m x 2.97m)
 En-Suite Shower Room
 Bedroom 2: 13'5 x 10'2 (4.09m x 3.10m)
 Bedroom 3: 10'3 x 9'6 (3.13m x 2.90m)
 Bedroom 4: 10'3 x 9'4 (3.13m x 2.85m)
 Bathroom

OUTBUILDING

Garage: 27'8 x 9'10 (8.44m x 3.00m)
 Conservatory Area: 10'11 x 7'10 (3.33m x 2.39m)

OUTSIDE

Front & Rear Gardens
 Driveway



Main features

- Well presented throughout
- An en-suite shower room, bathroom & a cloakroom adds convenience
- Sociable kitchen/lounge/dining area - perfect for today's lifestyle
- Lovely open fireplaces to both the dining area & sitting room to enjoy
- Excellent Commuter links with the M2 & M20 within easy reach



Nearest Schools

Primary Schools: St Mark's C of E Primary, Eccles 0.0 miles, Burham C of E Primary 0.6 miles, St Peter's C of E Primary 1.0 miles. Secondary Schools: Aylesford School 1.6 miles, Holmesdale Technology College 1.8 miles, Greenacre School 2.8 miles



Transport Information

Train Stations: New Hythe 1.2 miles, Aylesford 1.4 miles, Snodland 1.5 miles



Address

Bull Lane, Eccles, Aylesford, Kent, ME20



Directions

For directions to this property please contact us.



Call Larkfield Branch 01732 847877 ■ wardsofkent.co.uk



- Legal advice should be taken to verify fixtures/fittings, planning, alterations and/or lease details
- Appliances & services are untested, dimensions are approximate and floor plans are not to scale
- Through a Homewise Home For Life Plan people aged 60+ can secure this property for up to 59% less, by purchasing a Lifetime Lease.



12935503/20250515/CK/JT